

► Geological Framework of the Fox Lake Uranium Deposit, Athabasca Basin, Canada

28 November 2017

Scott Rogers¹, Nathan Bridge¹,
Clare O'Dowd¹, Haiming Yang¹,
Alexandre Aubin¹, and Andrew Yackulic²

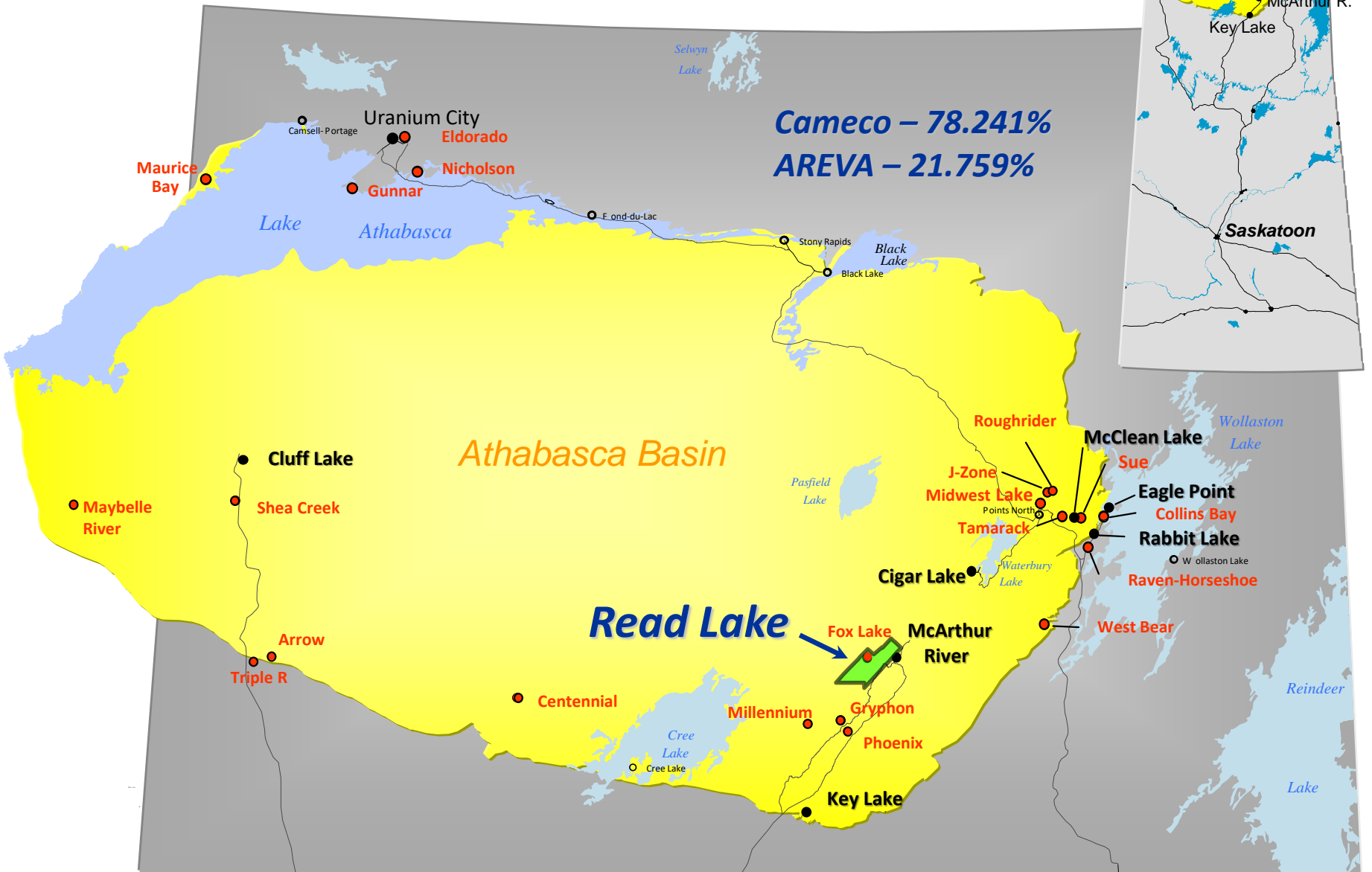
¹ Cameco Corporation

² Yak Geoscience

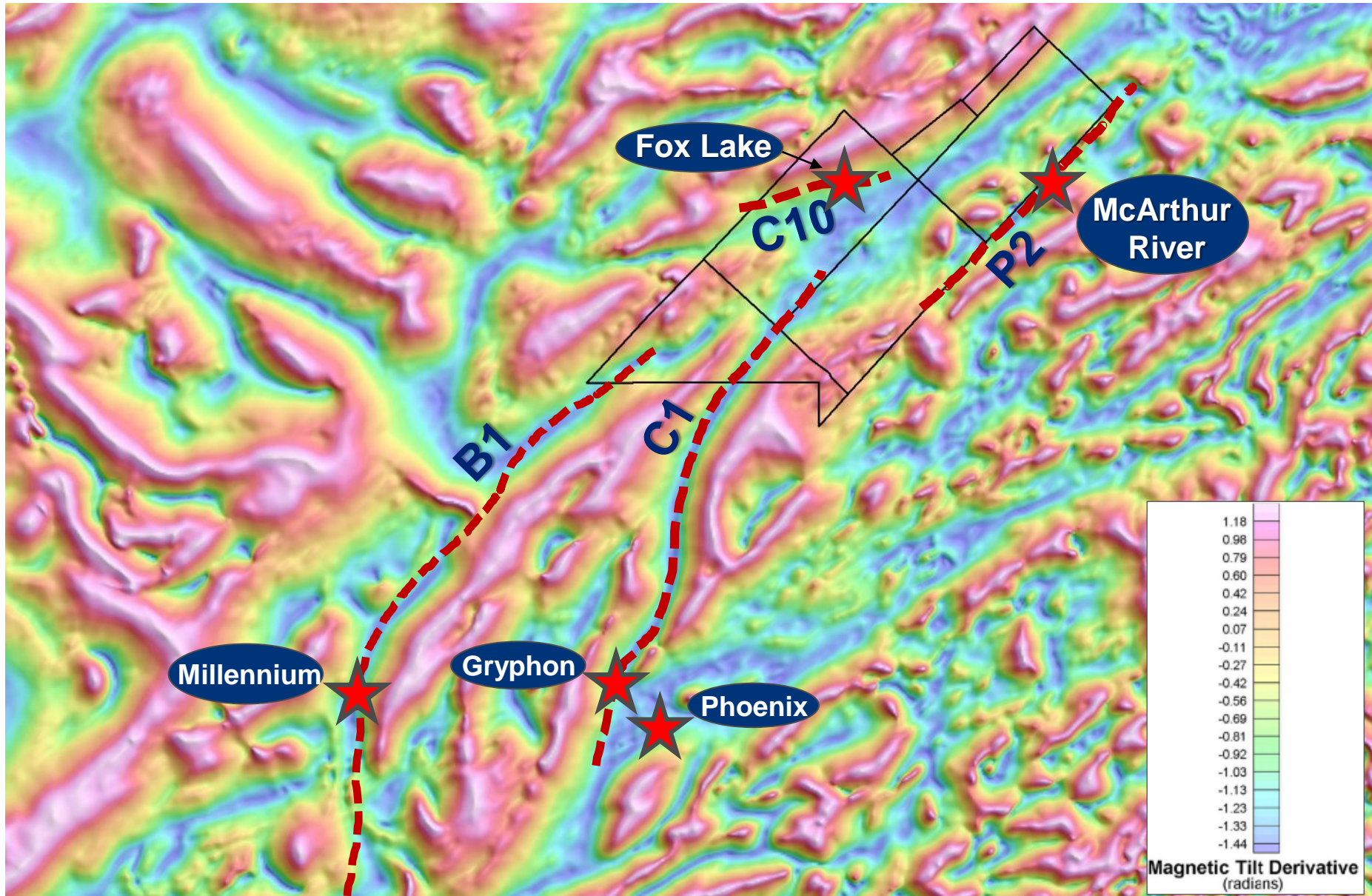


cameco.com

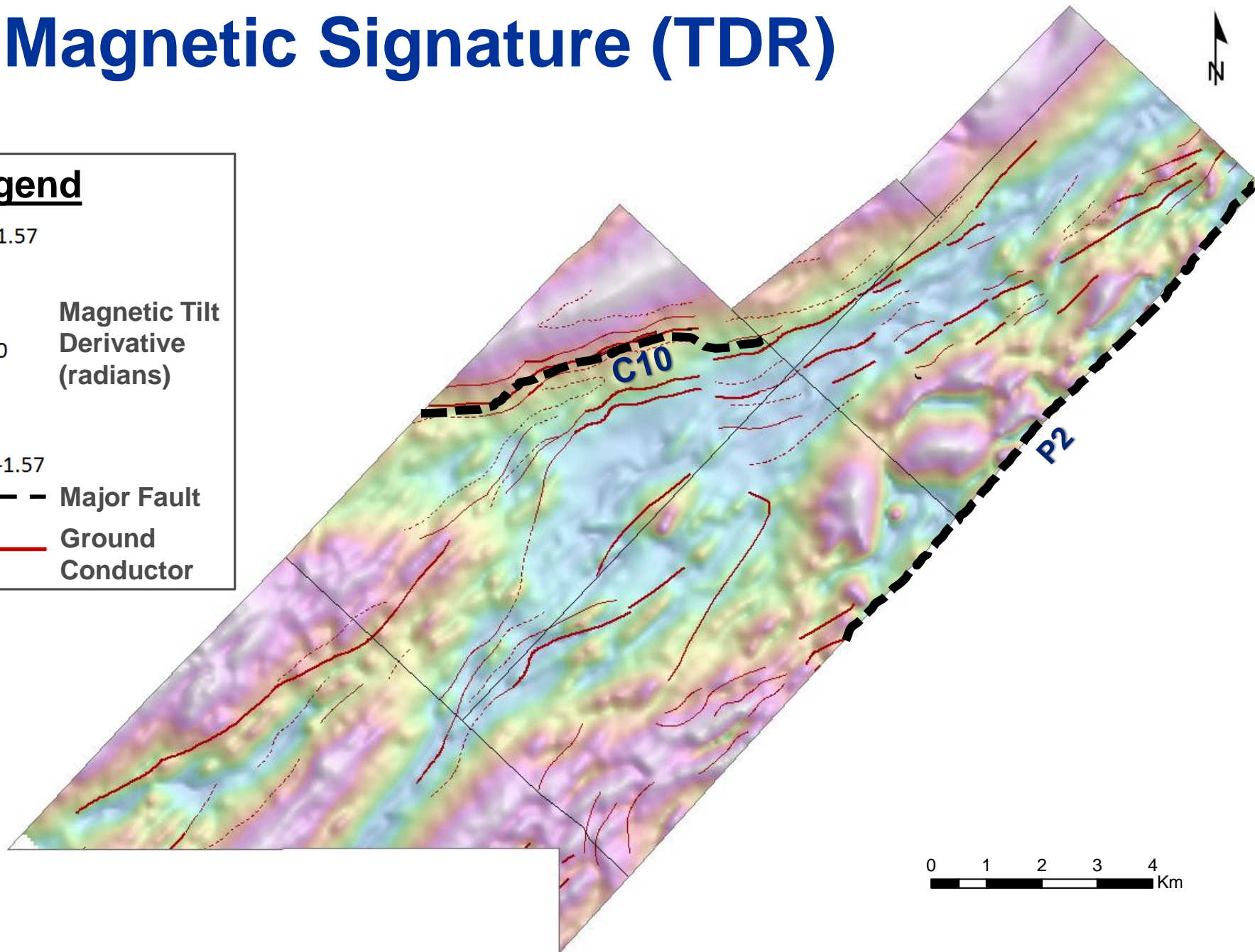
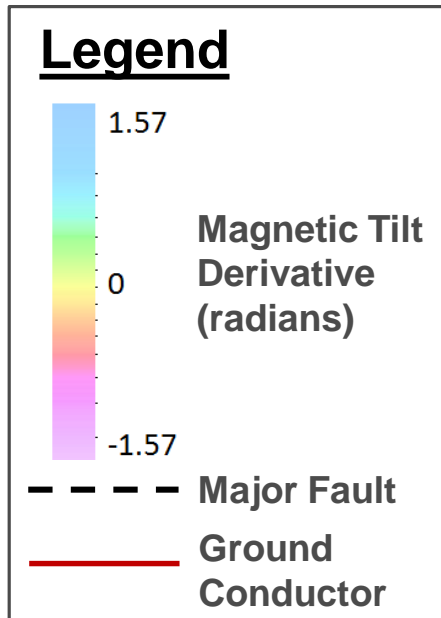
Location Map



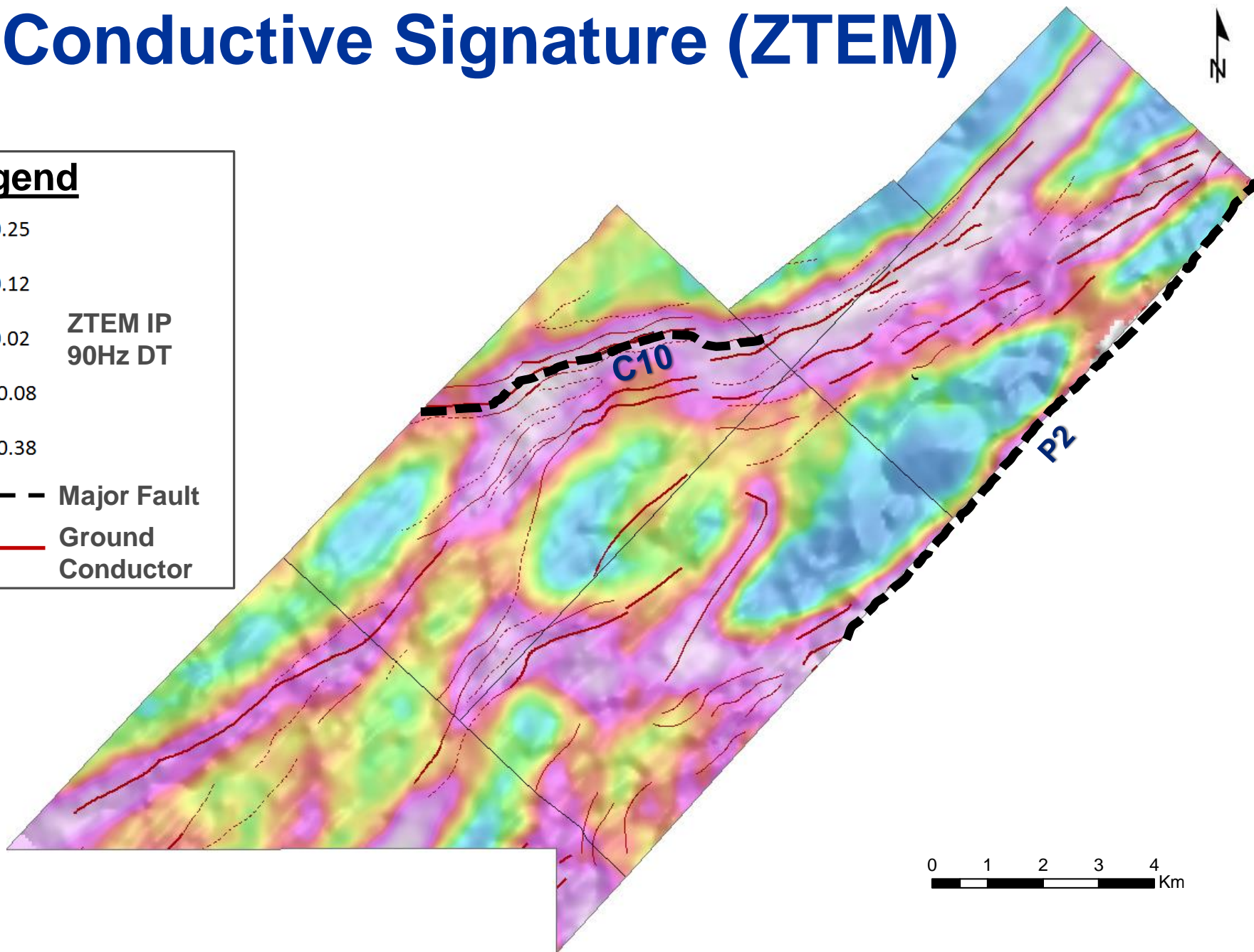
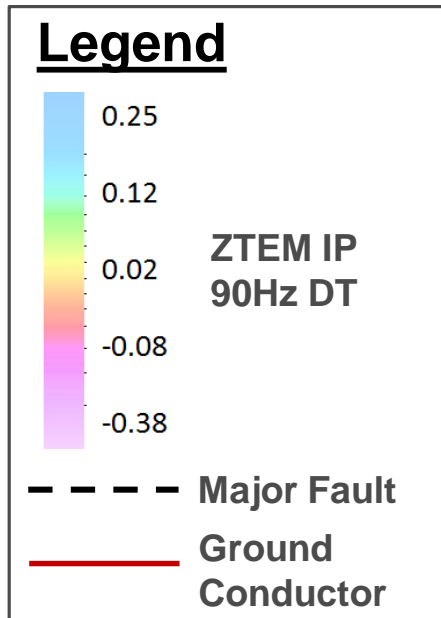
Regional Geology



► Magnetic Signature (TDR)

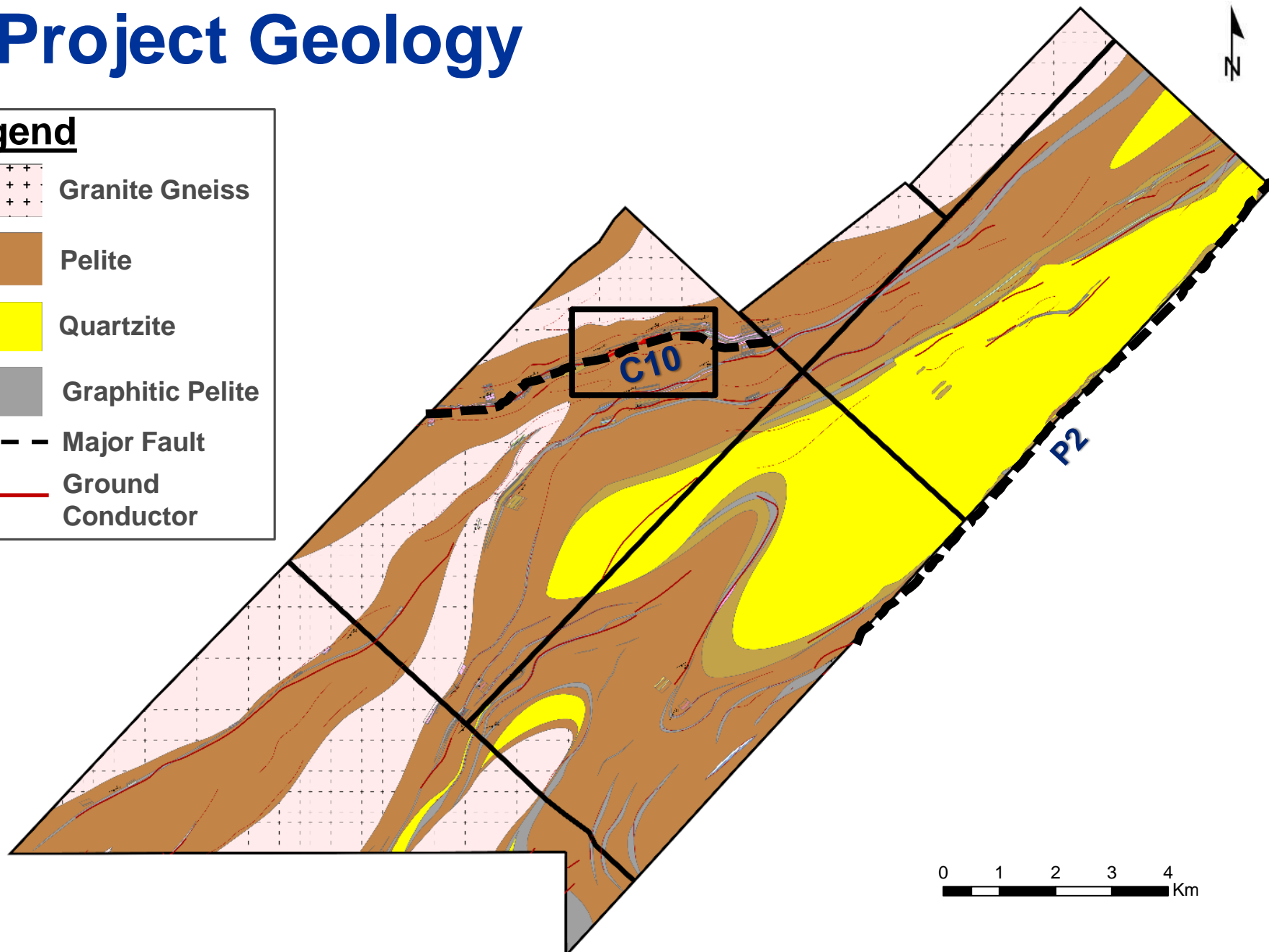
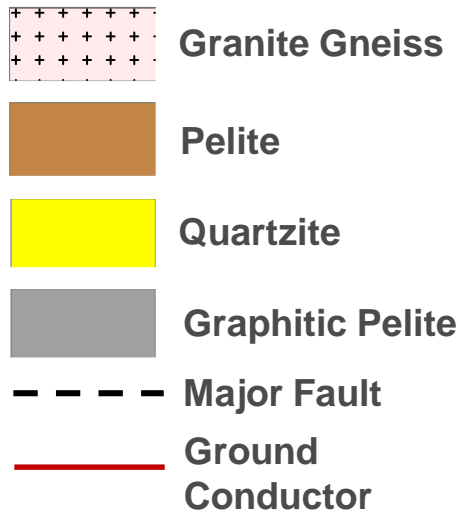


► Conductive Signature (ZTEM)

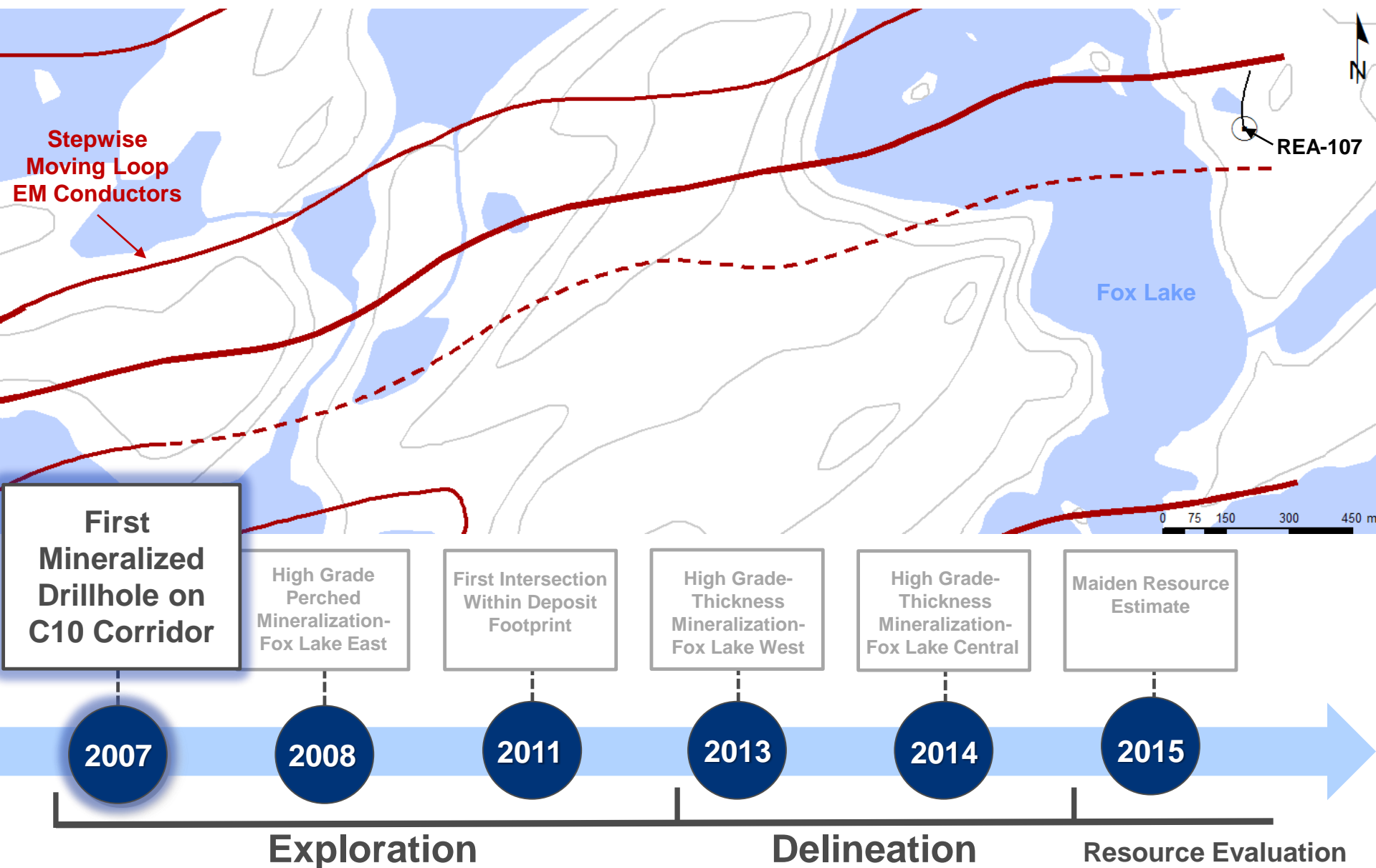


Project Geology

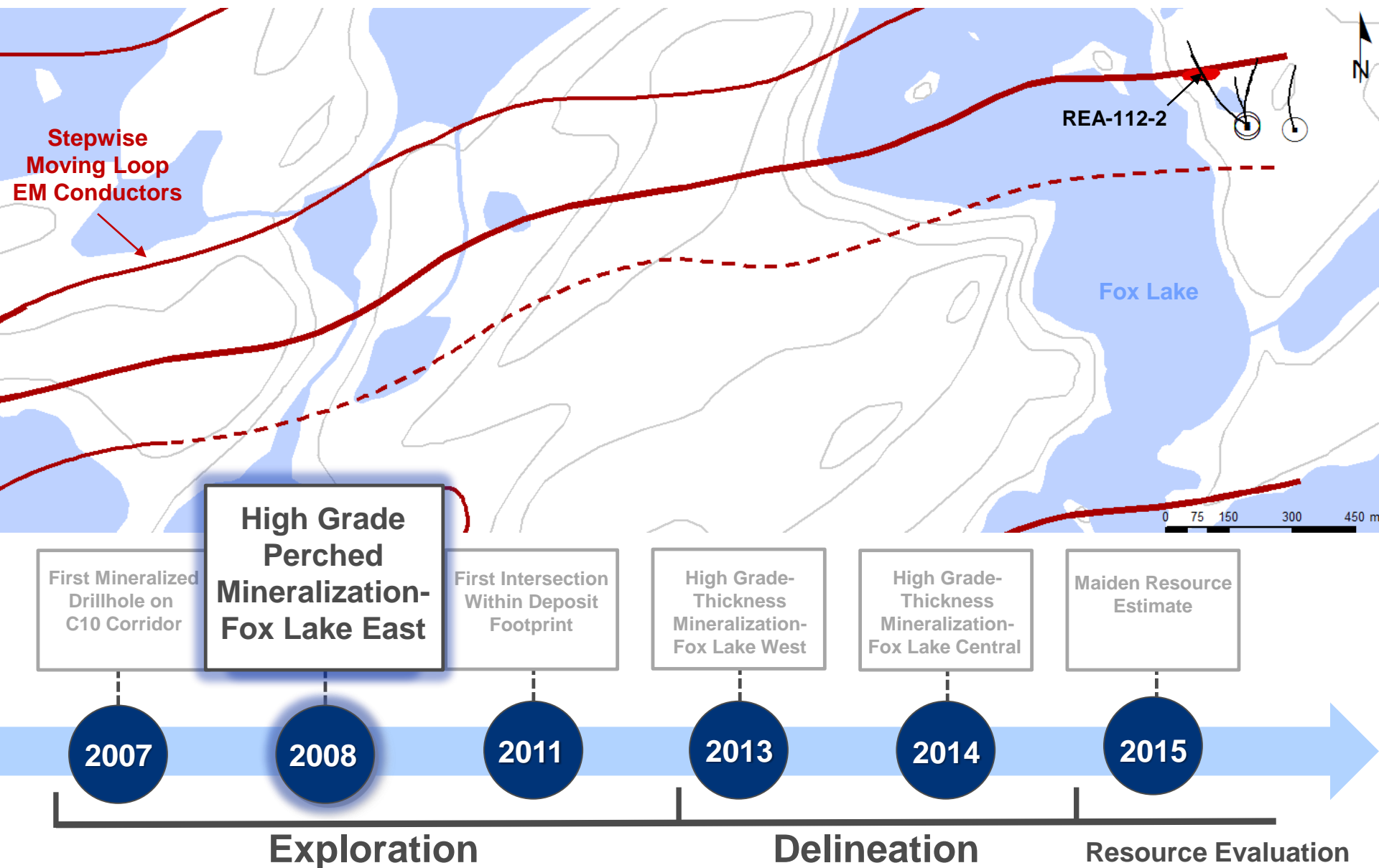
Legend



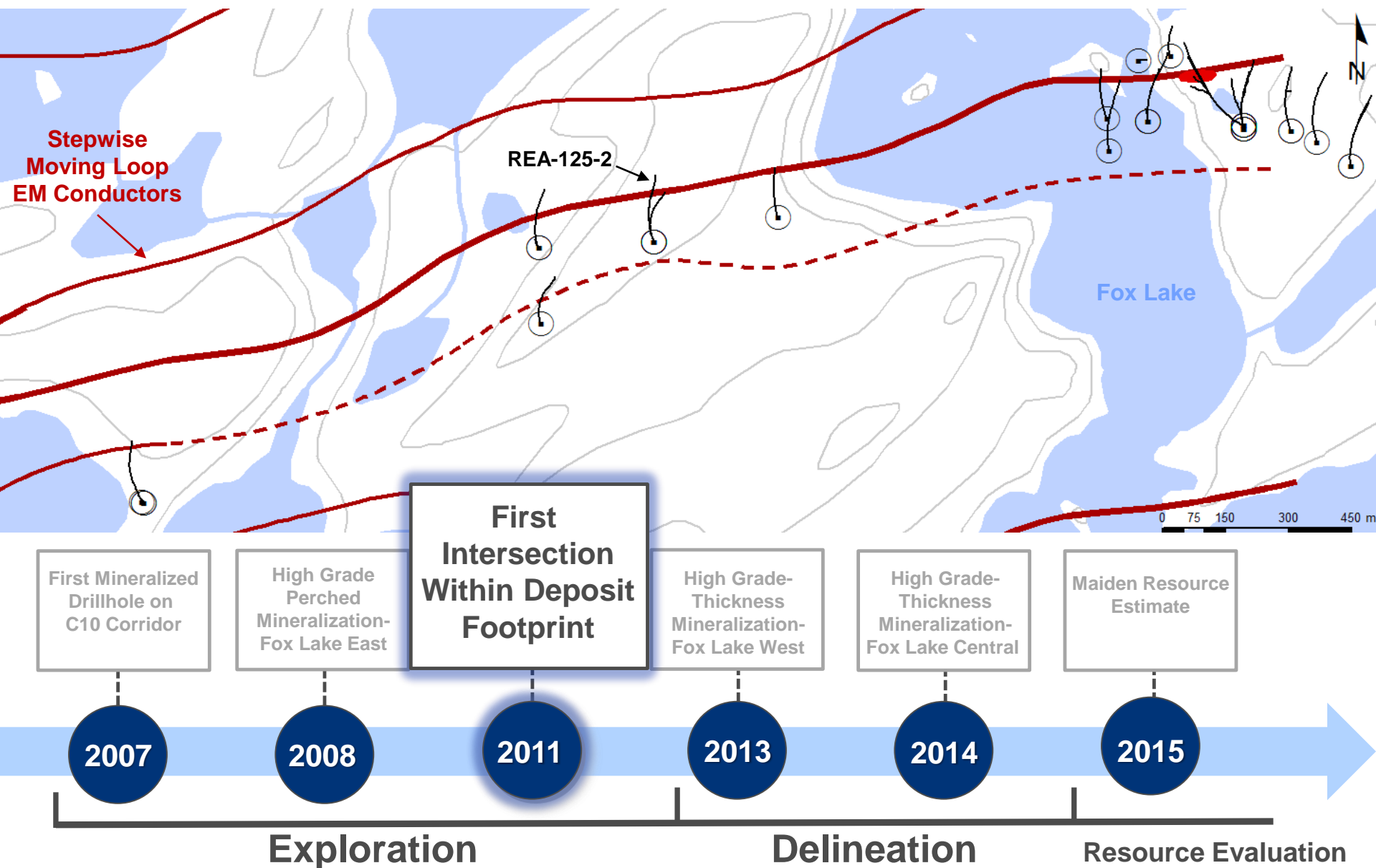
► Fox Lake Discovery Timeline



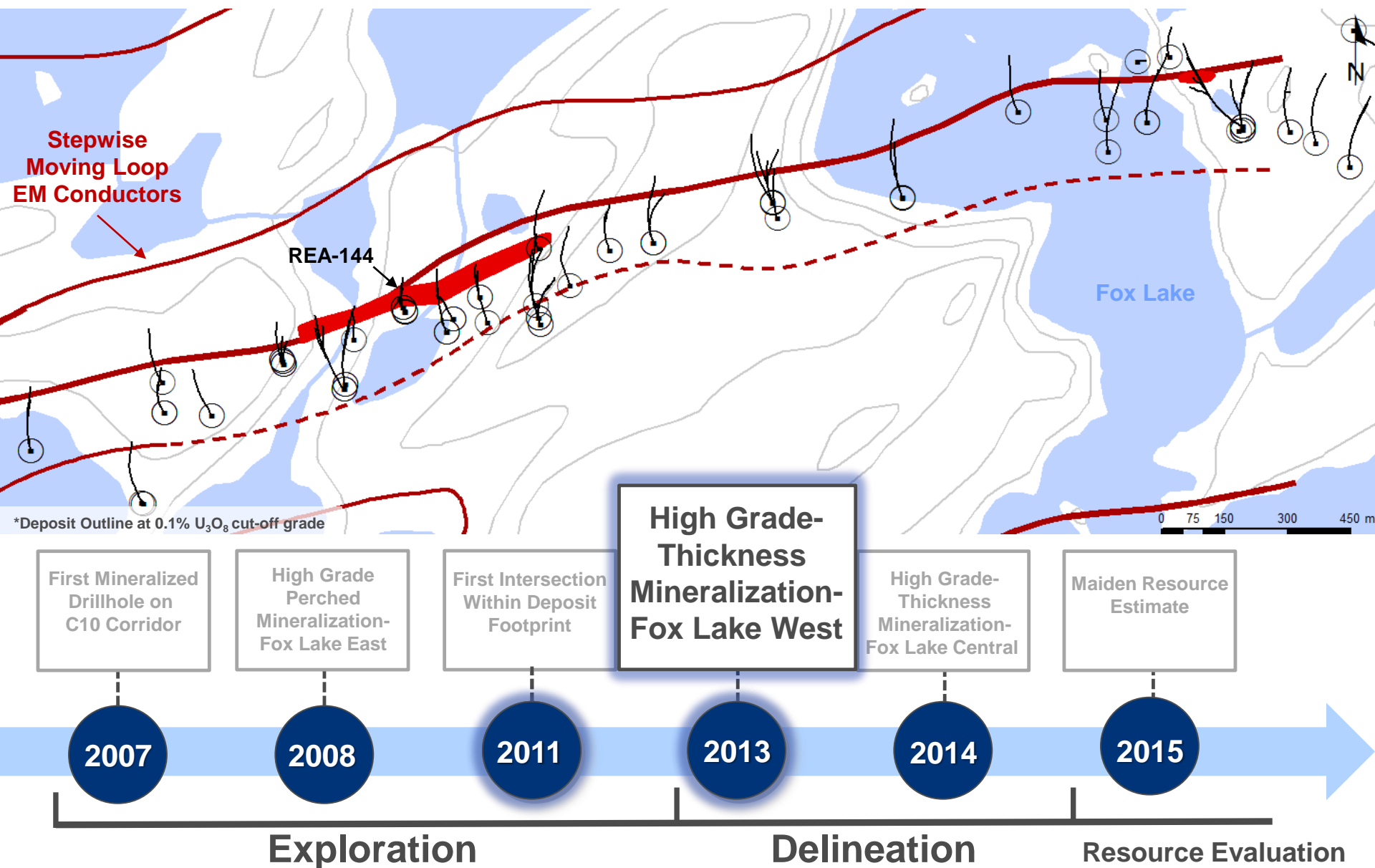
► Fox Lake Discovery Timeline



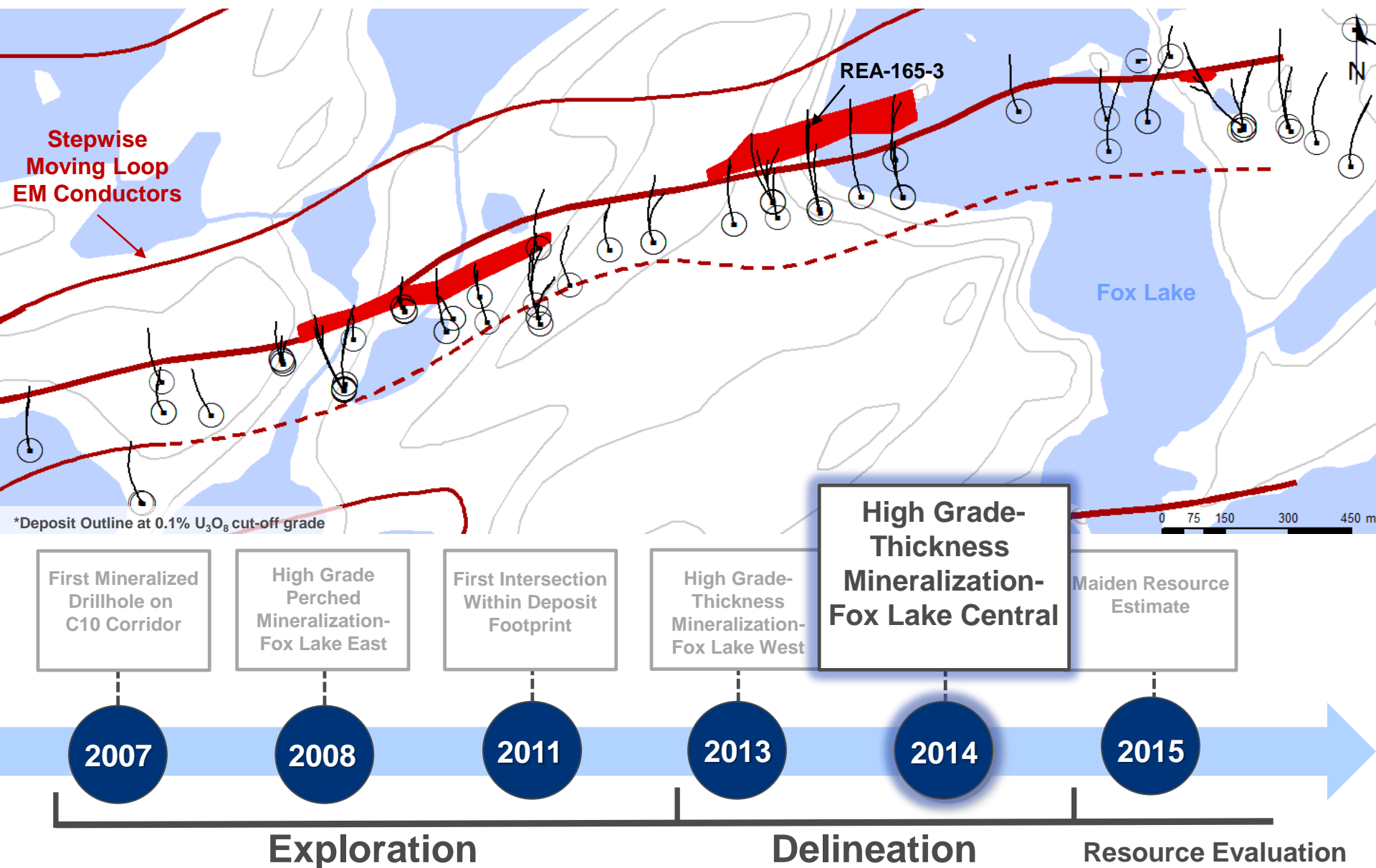
Fox Lake Discovery Timeline



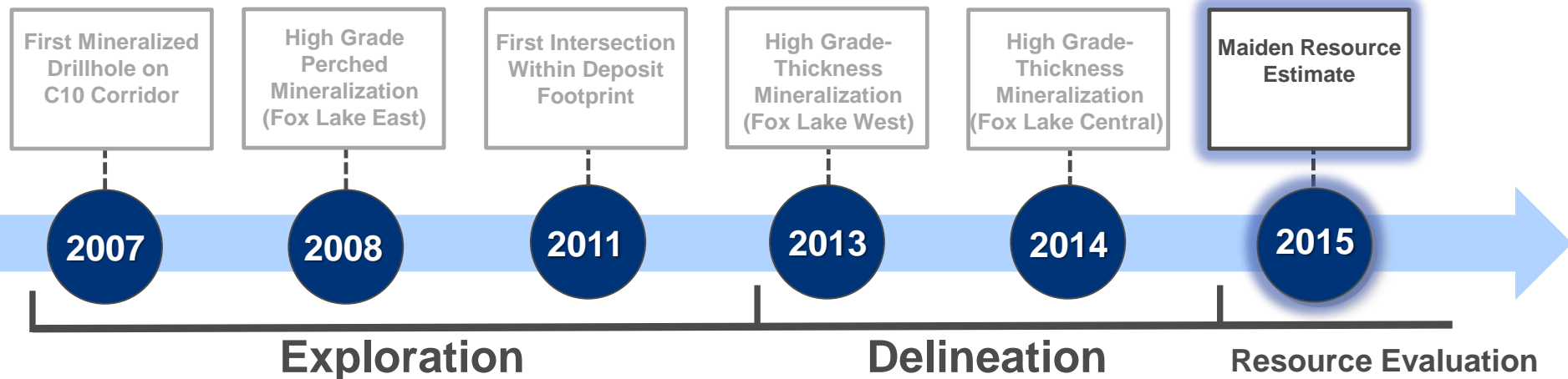
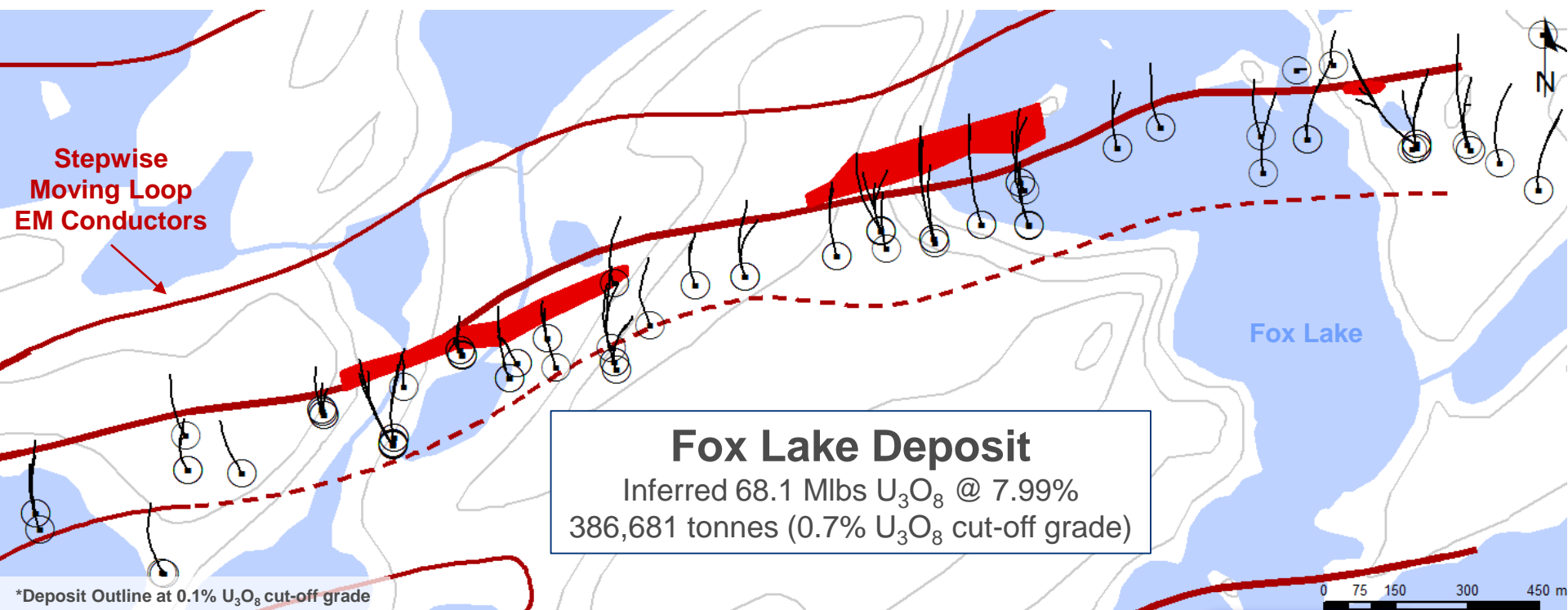
Fox Lake Discovery Timeline



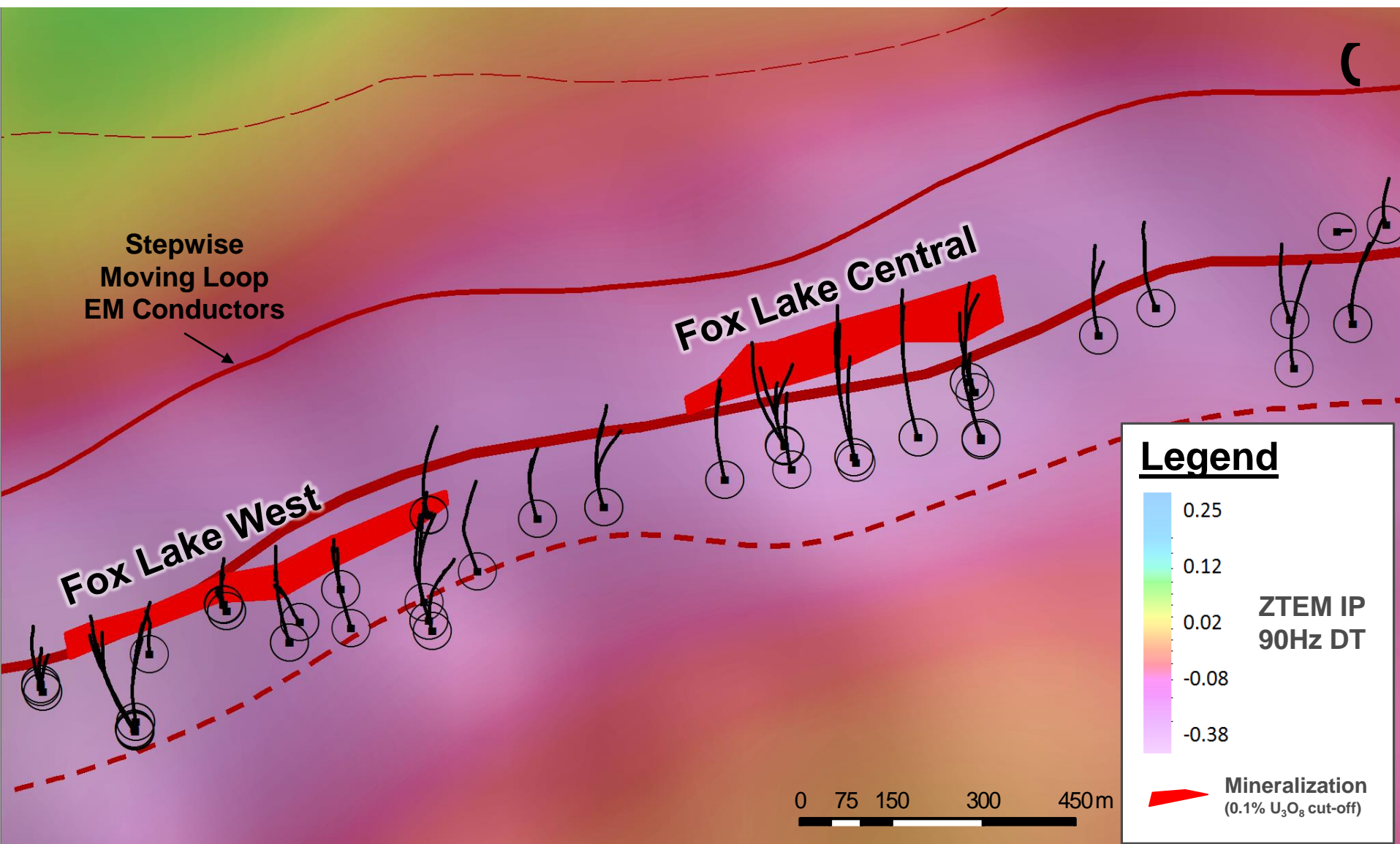
Fox Lake Discovery Timeline



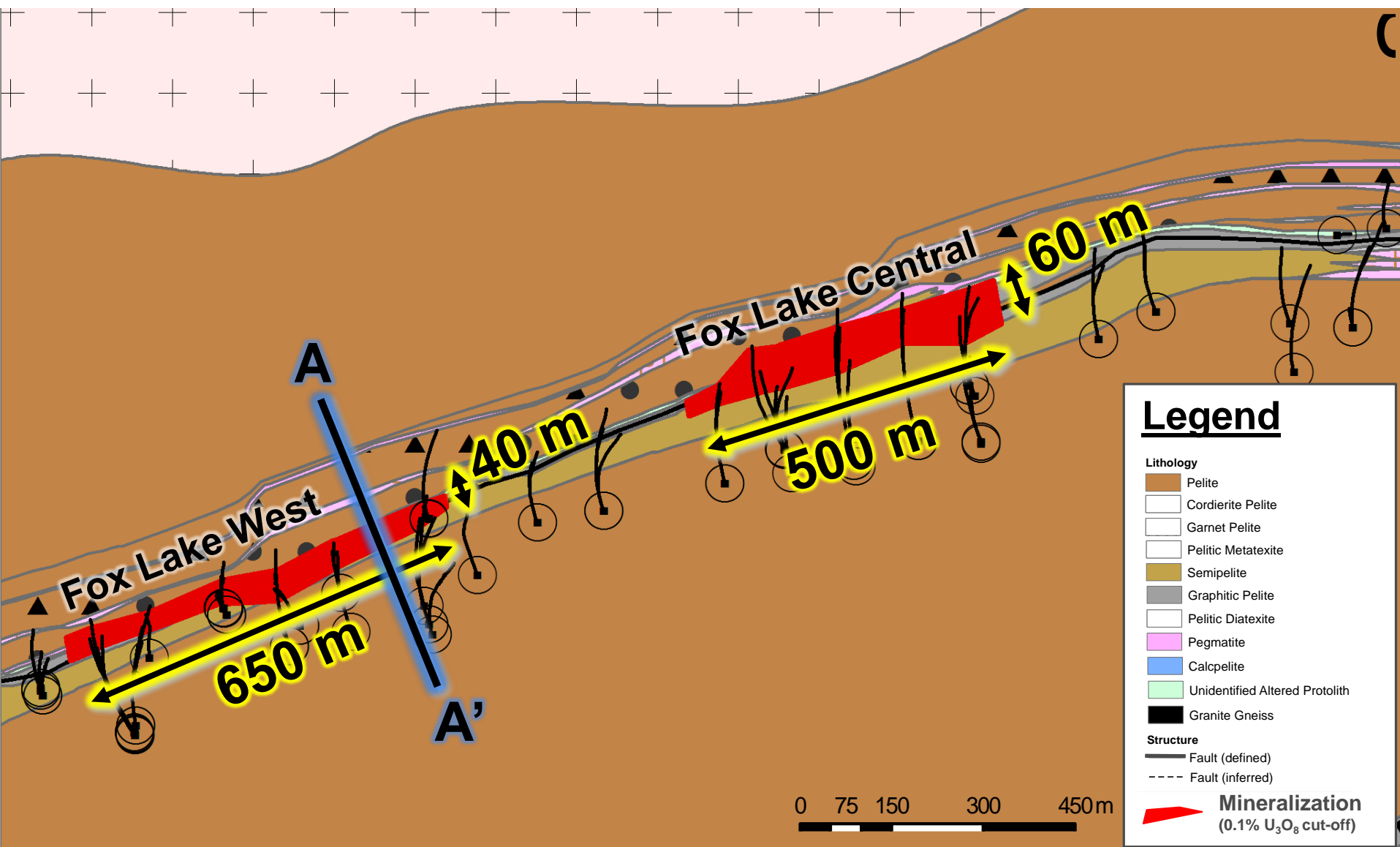
Fox Lake Discovery Timeline



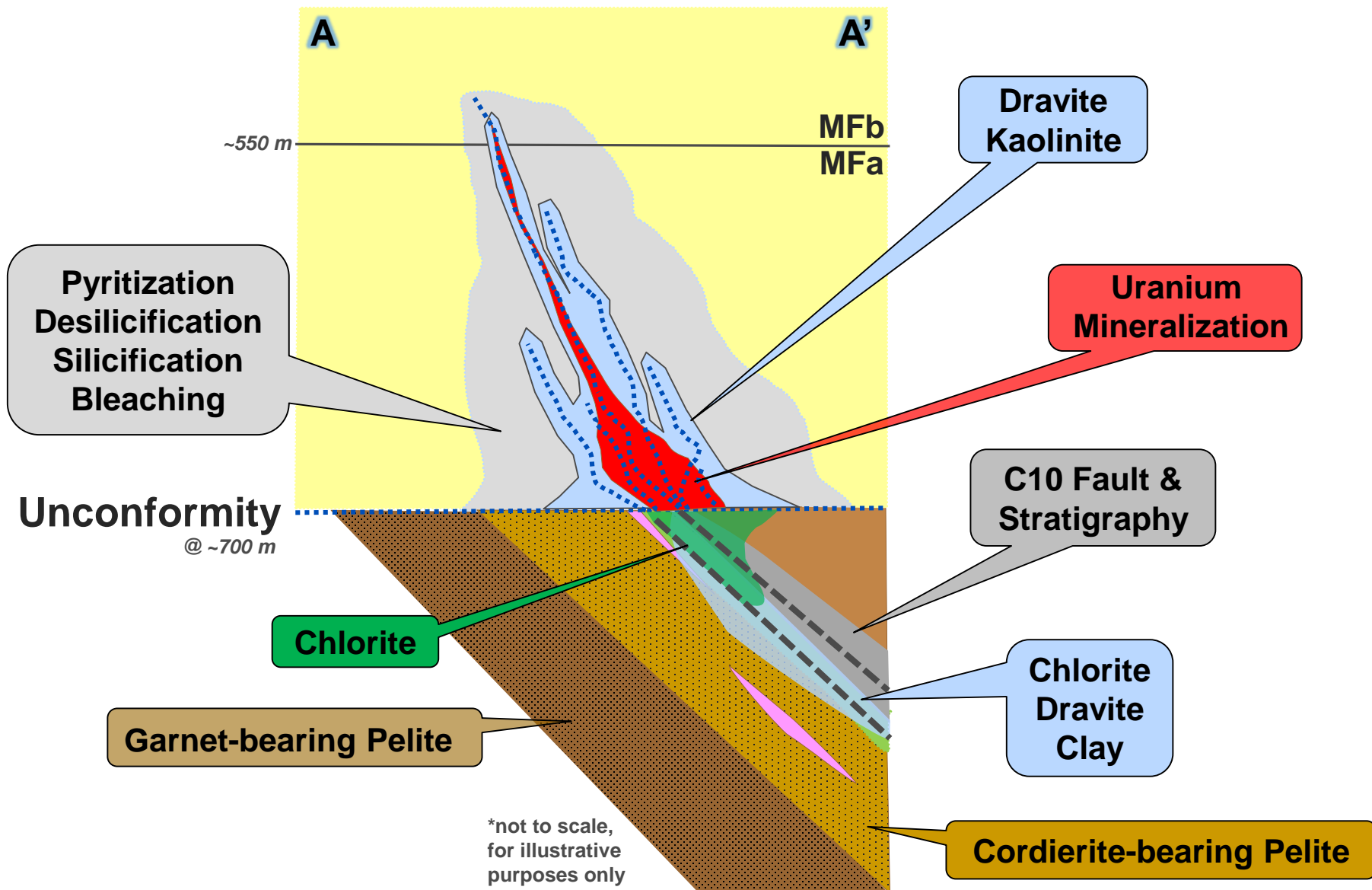
► Stepwise Moving Loop EM



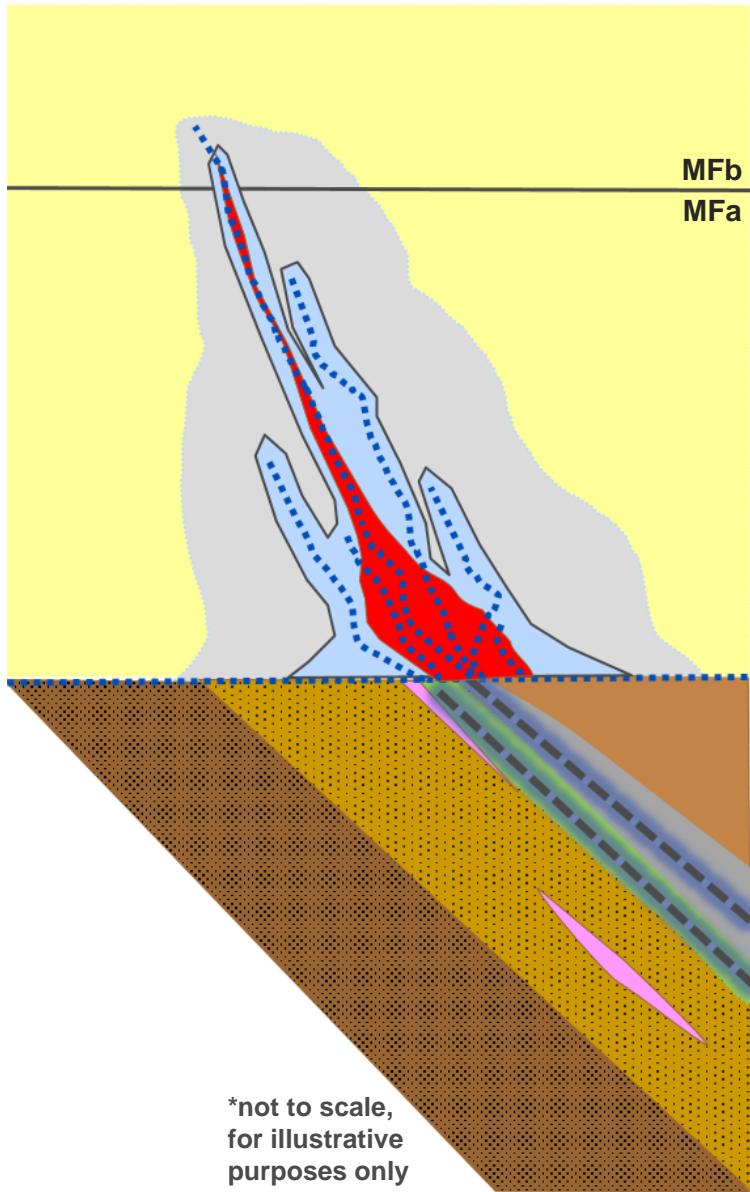
Local Geology



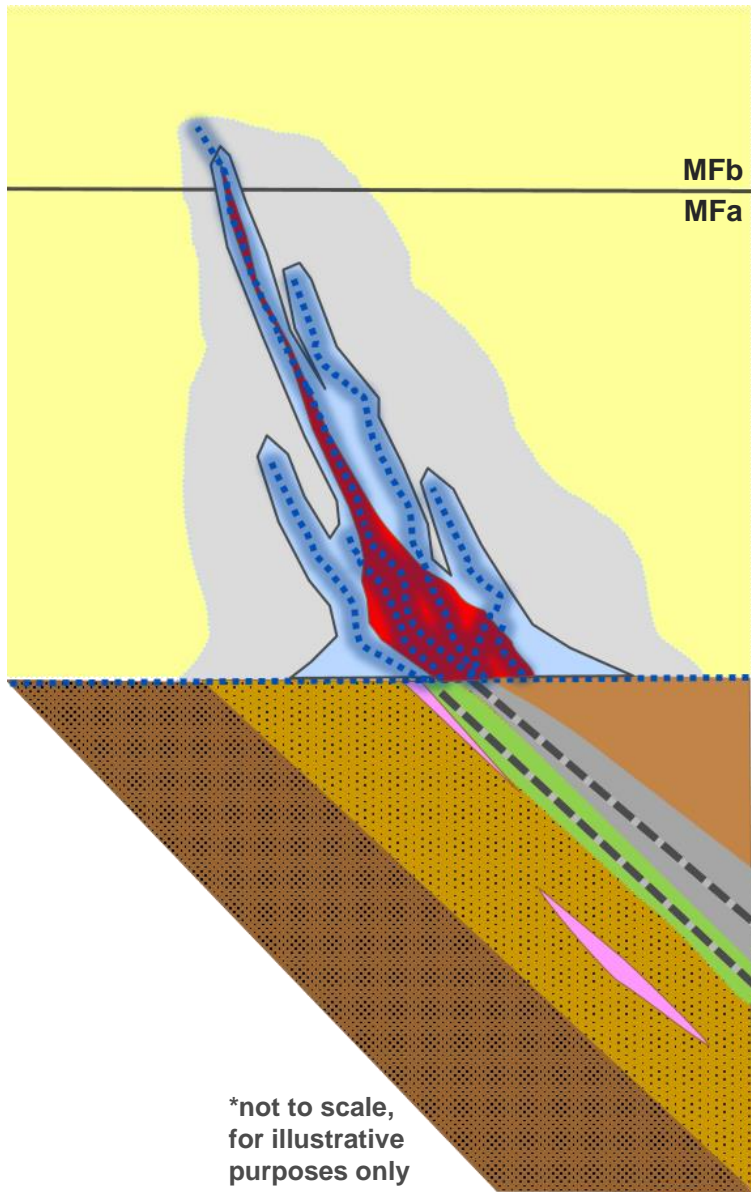
Fox Lake Schematic Section



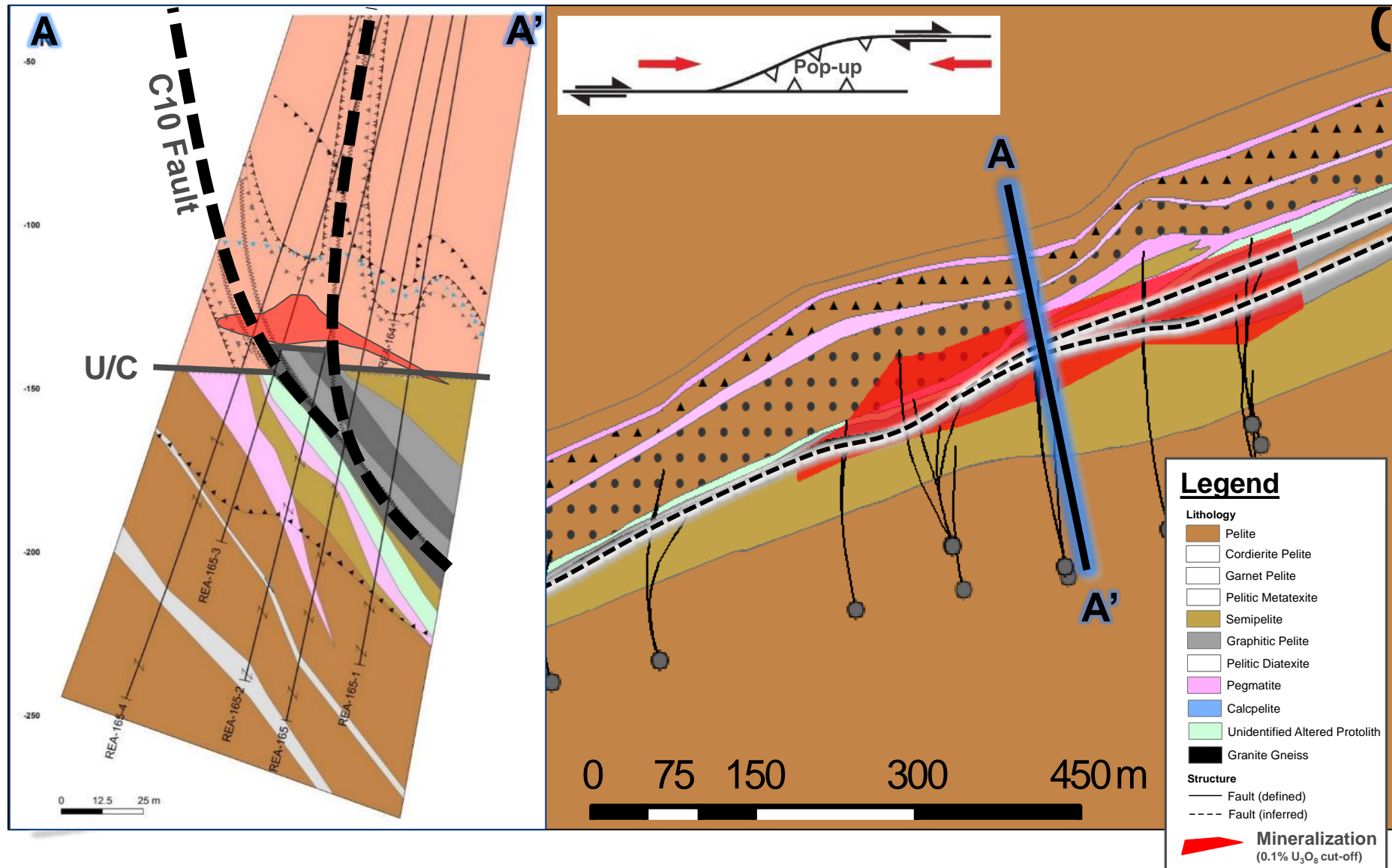
► Basement Structure



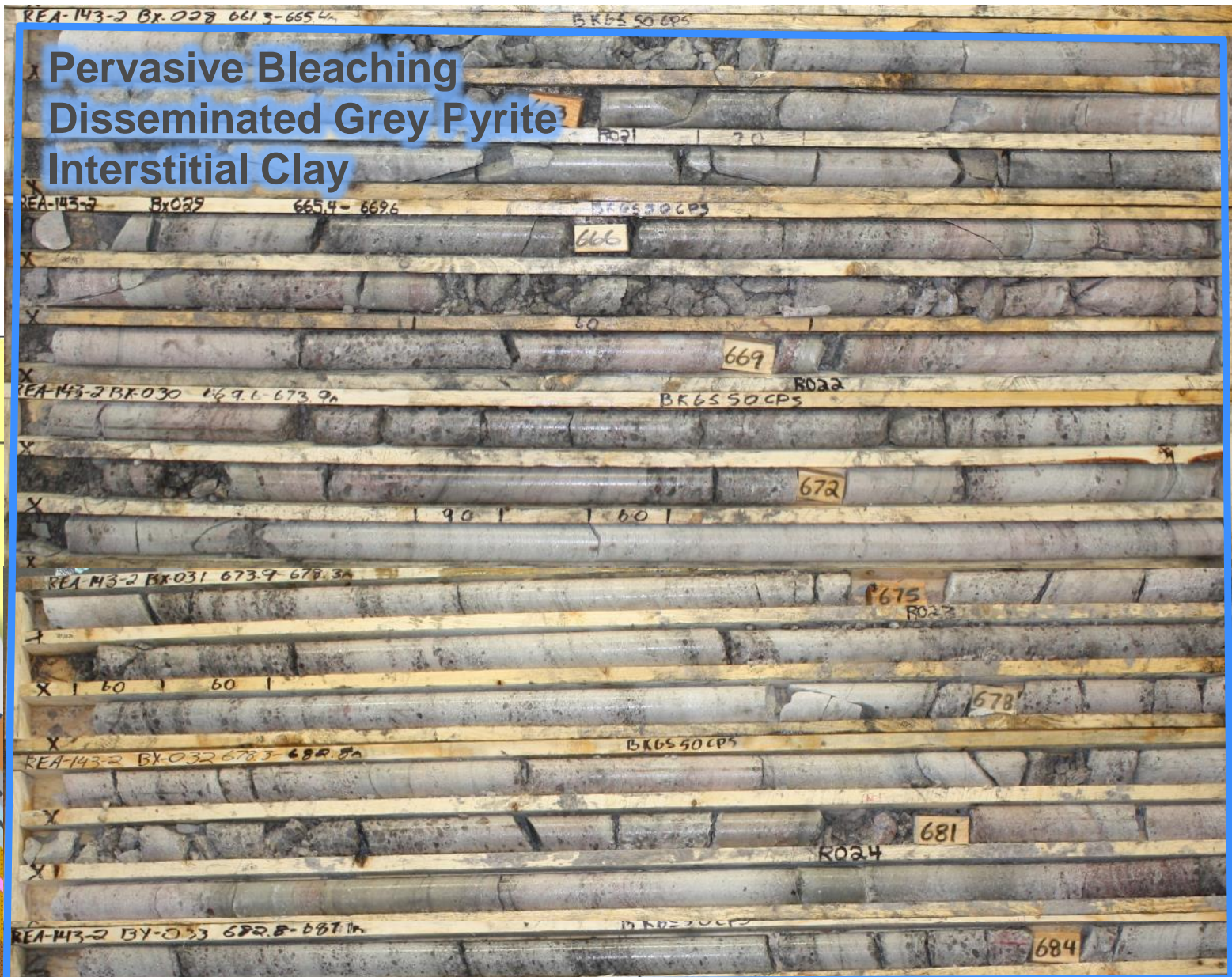
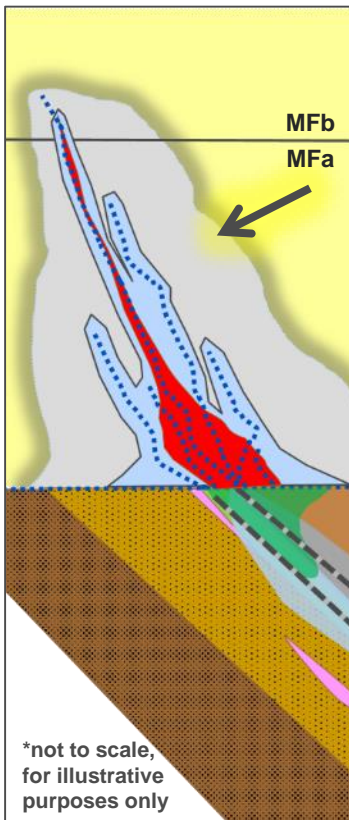
Sandstone Structure



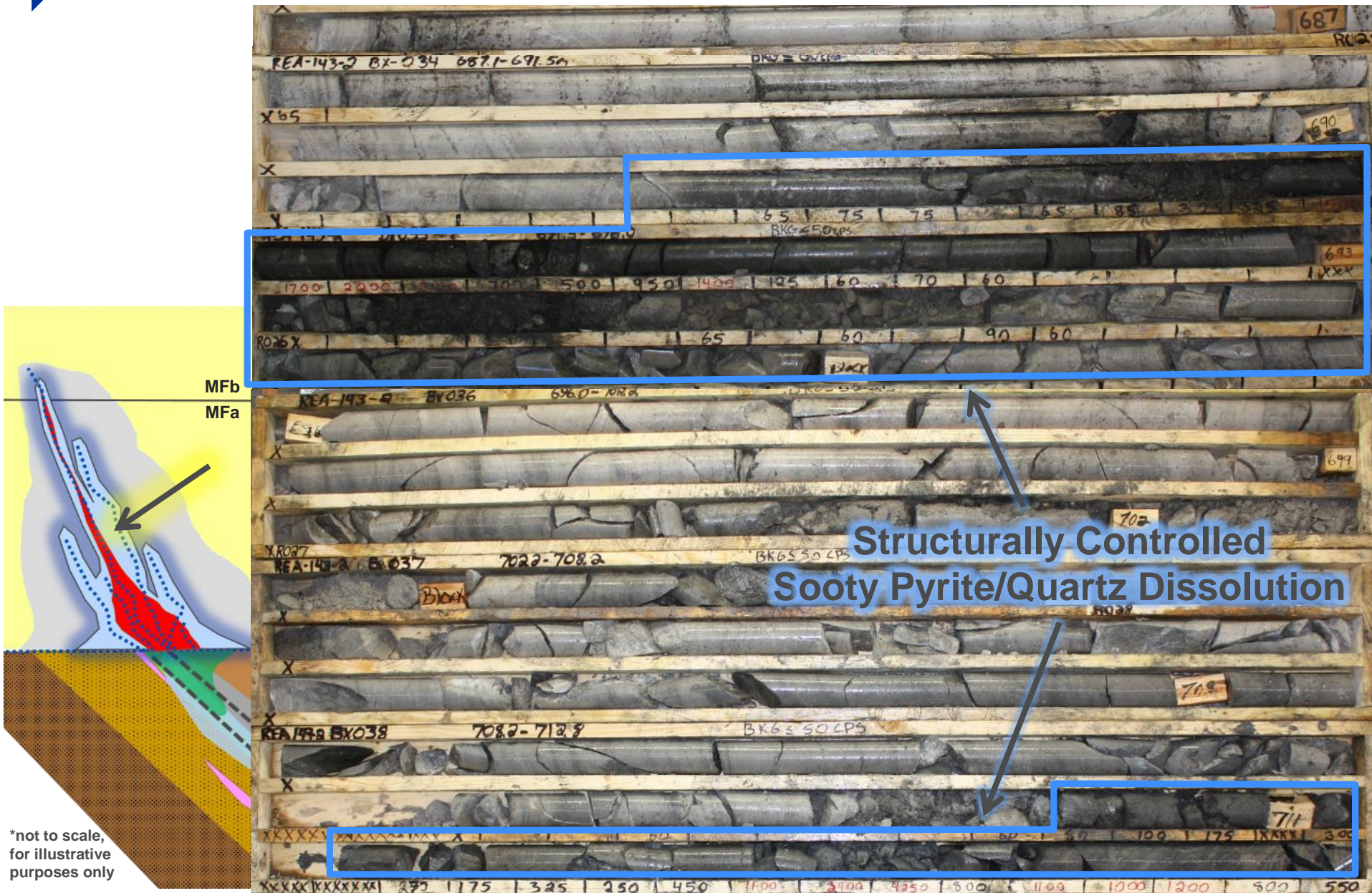
Fox Lake Central – Structural Geology



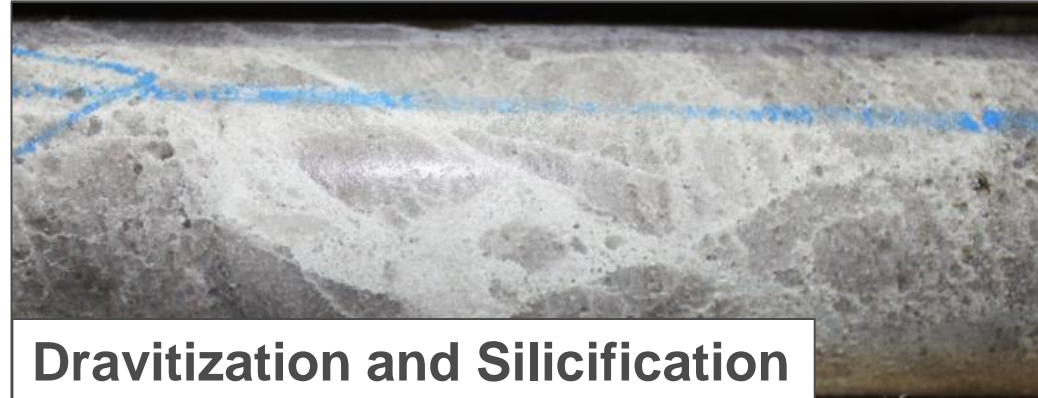
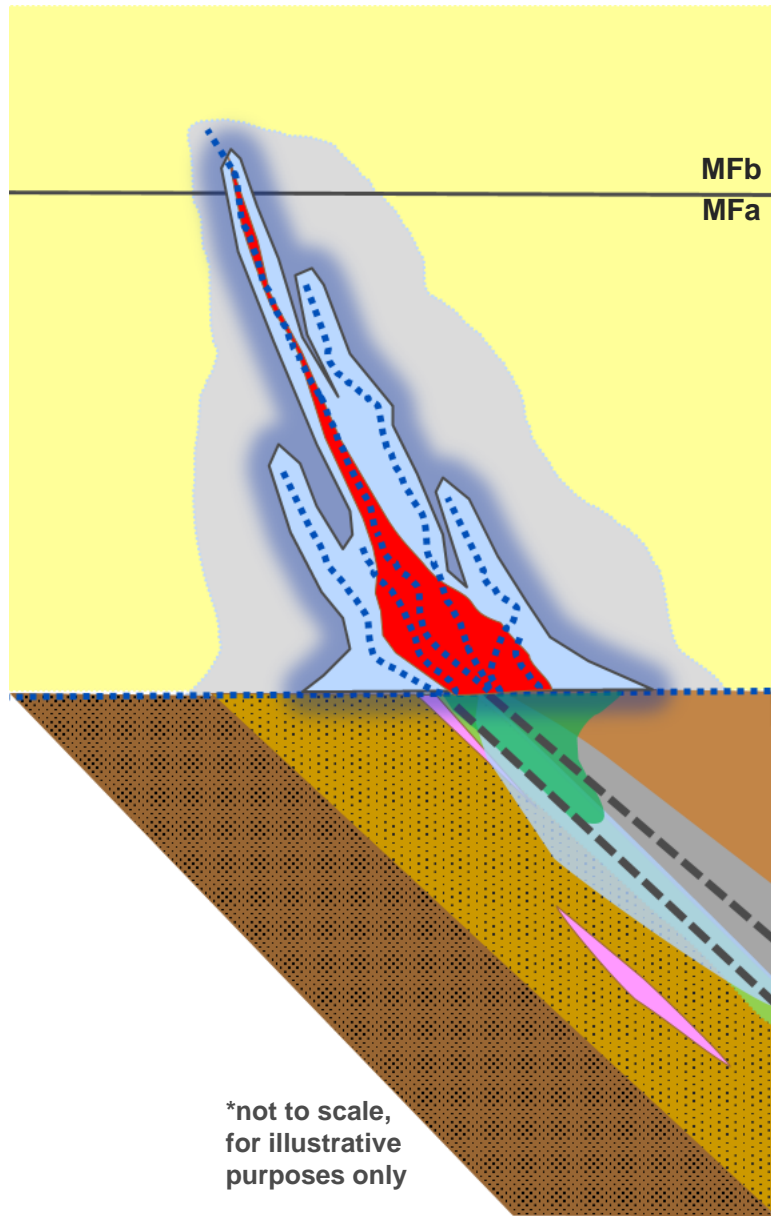
► Distal Sandstone Alteration



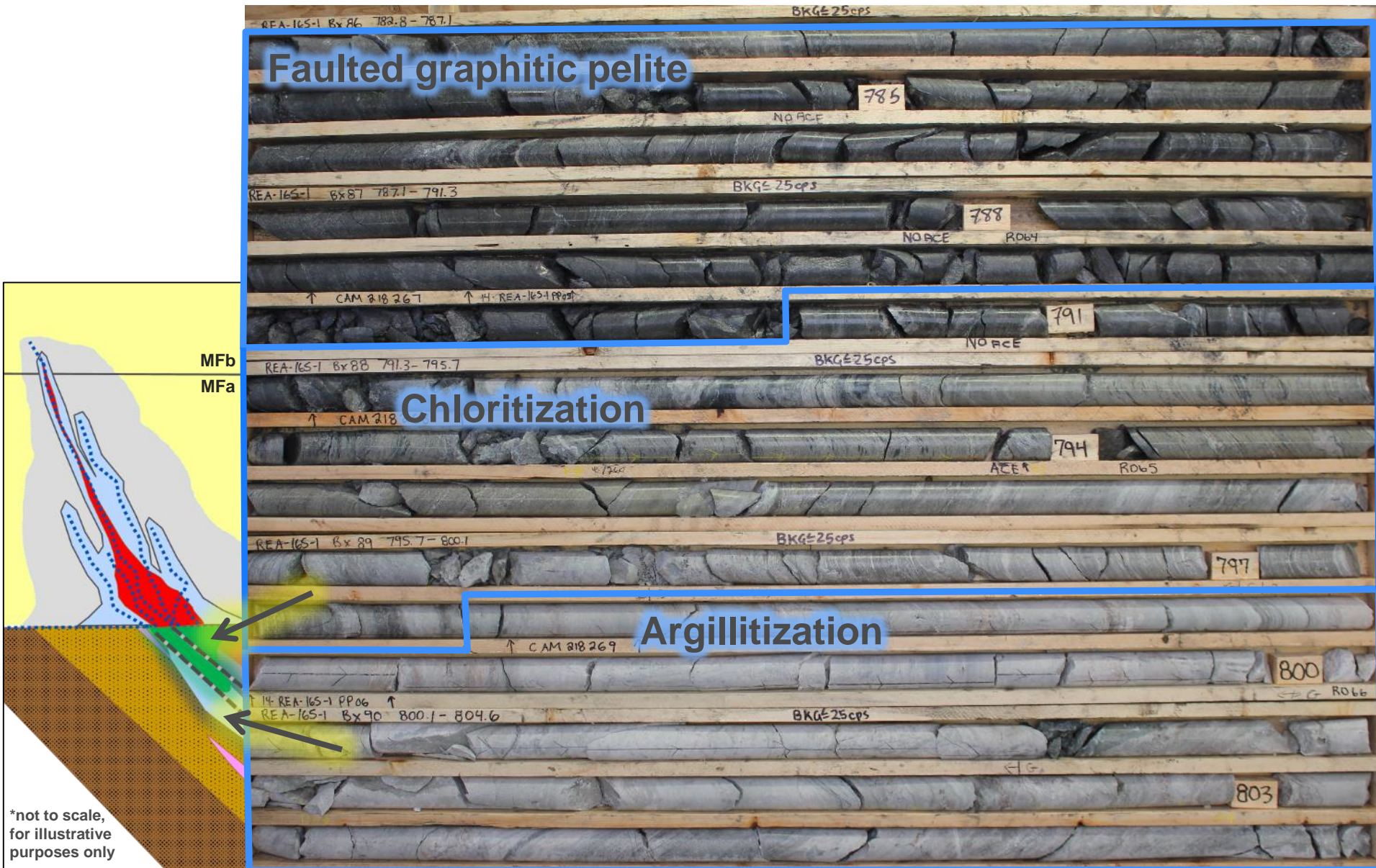
► Proximal Sandstone Alteration



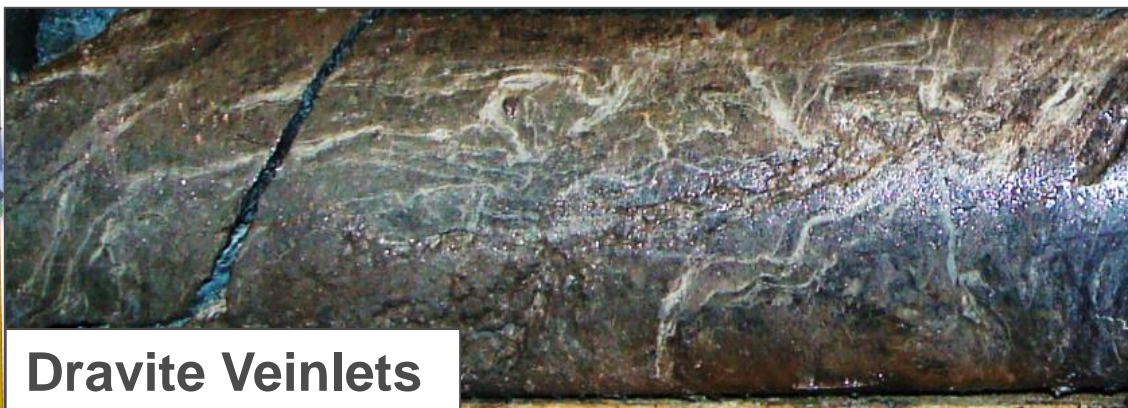
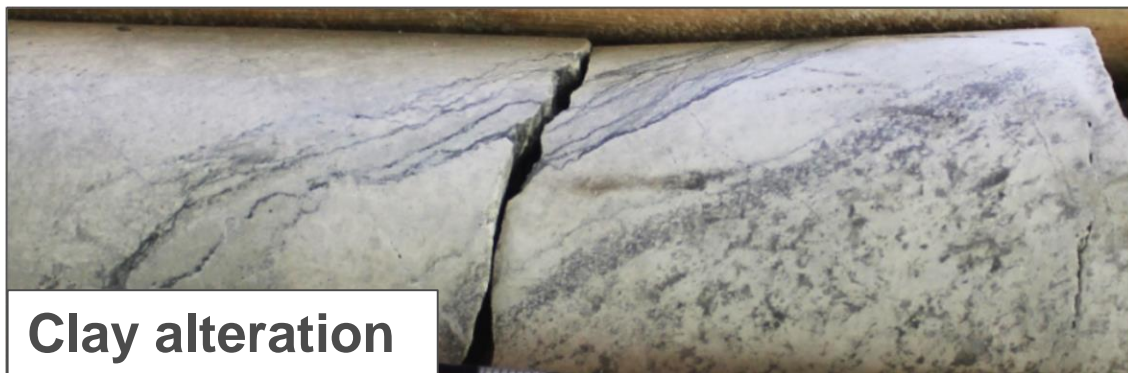
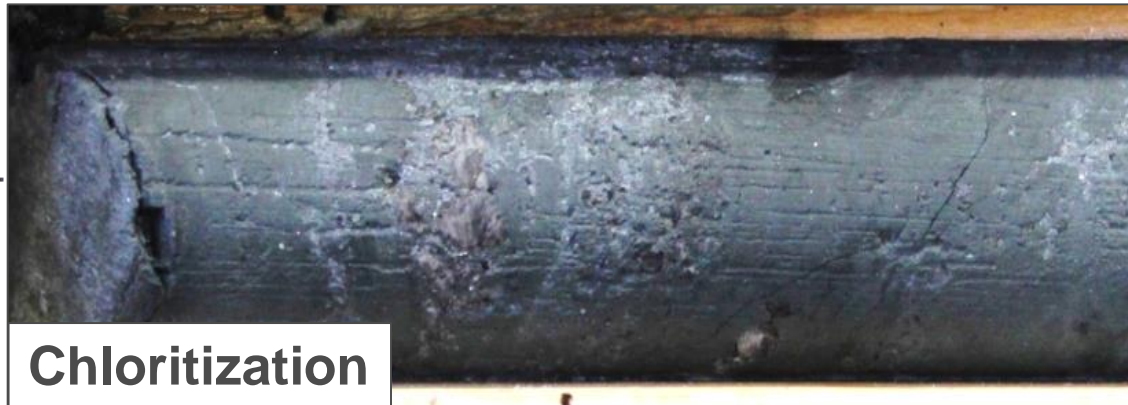
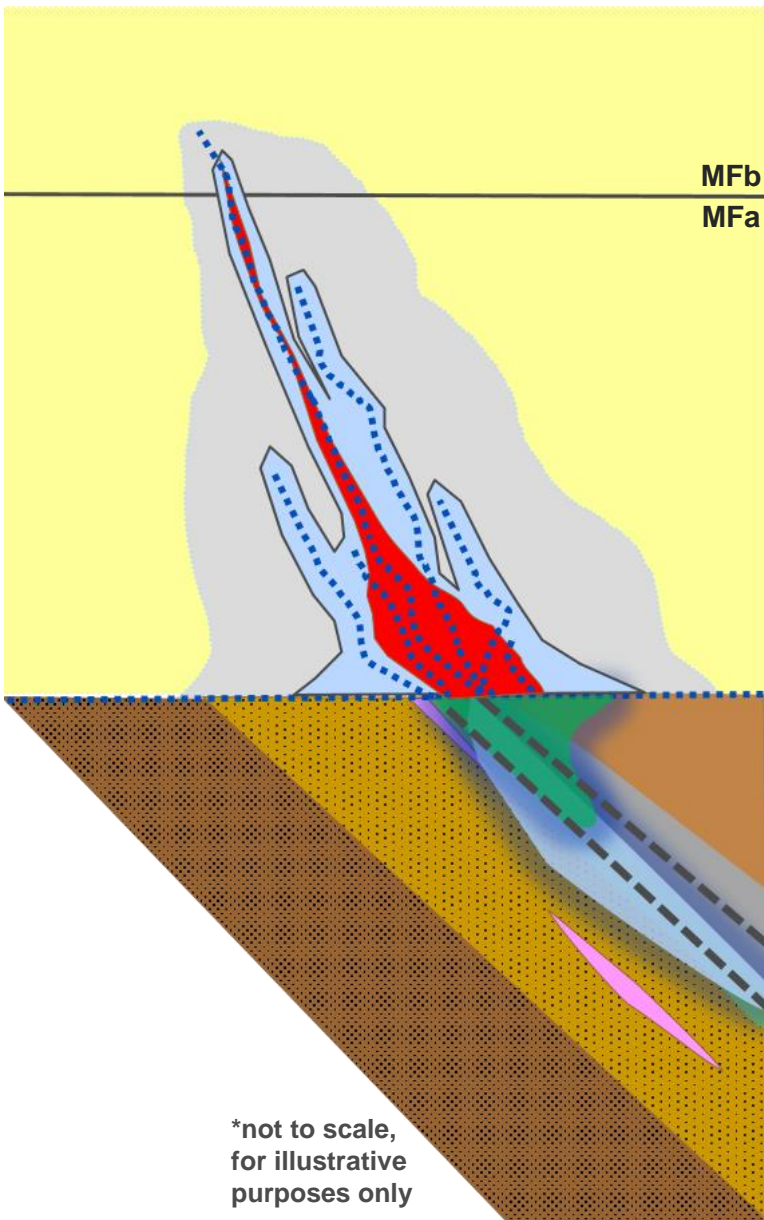
► Proximal Sandstone Alteration



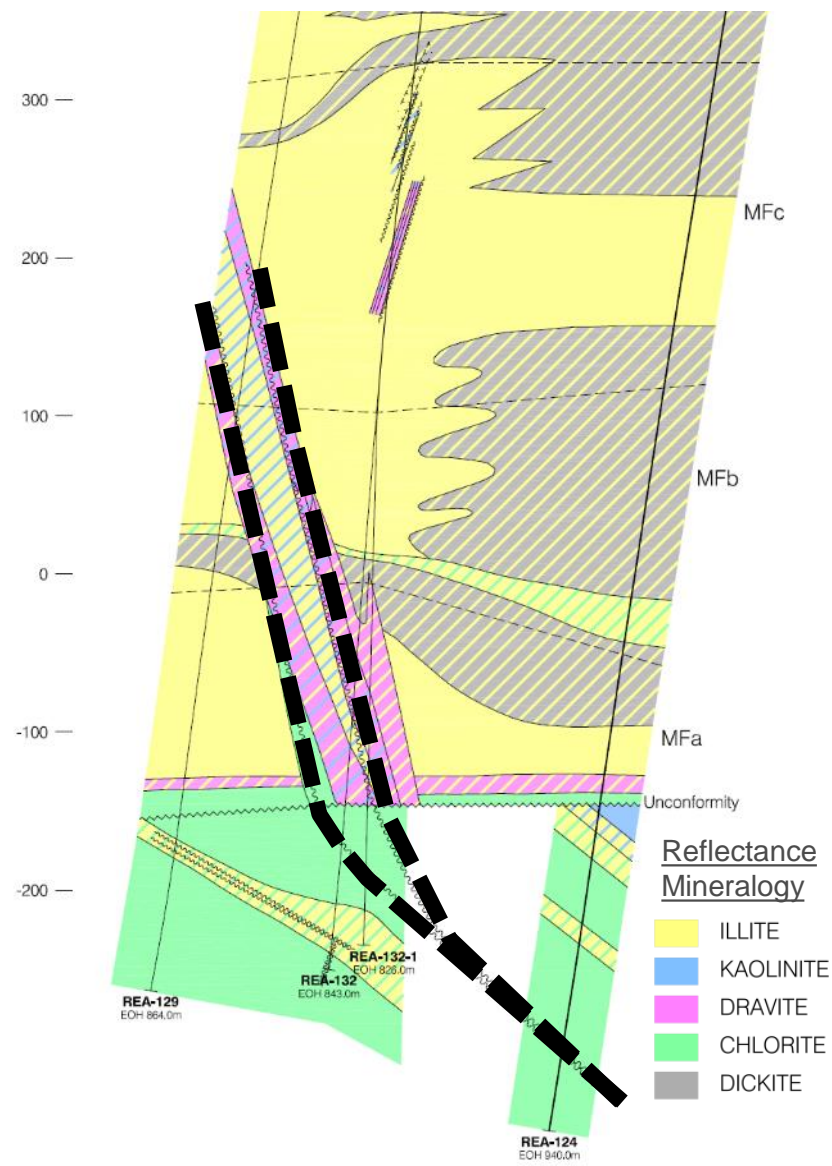
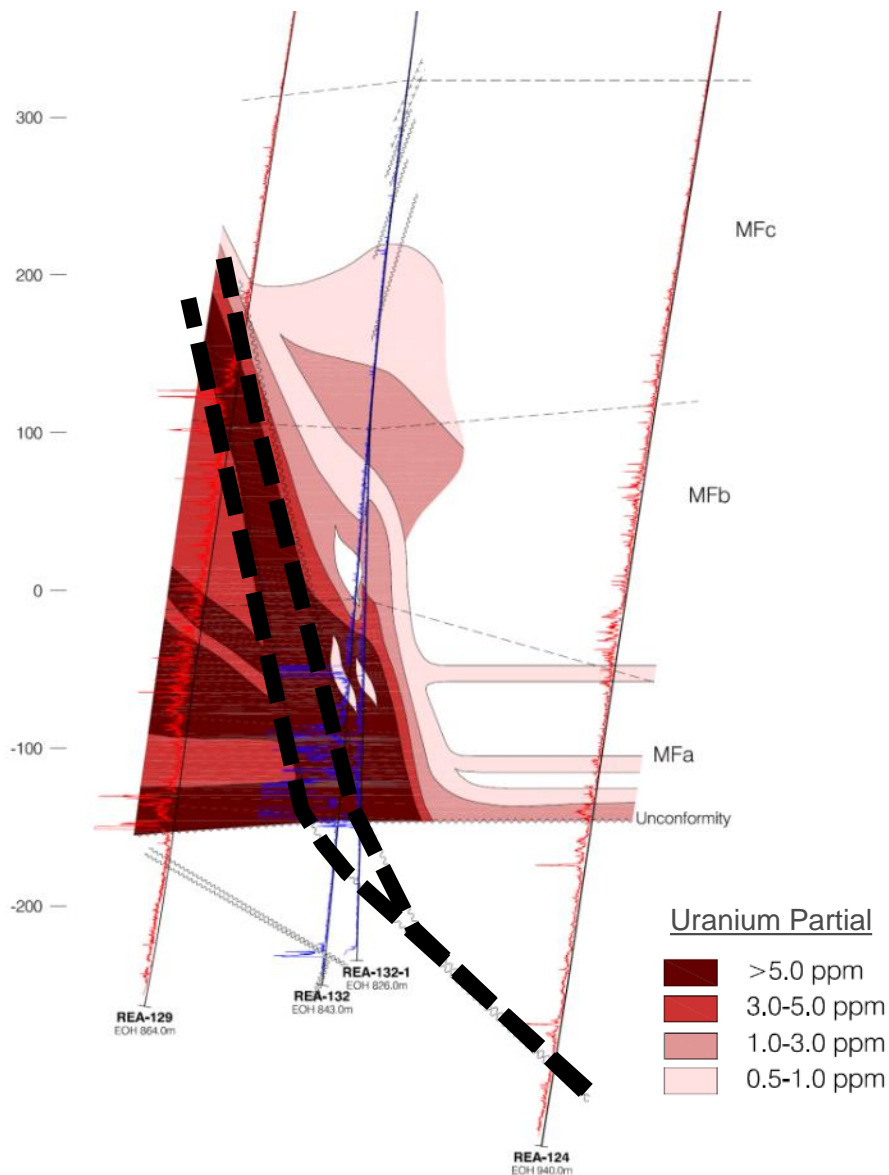
► Basement Alteration



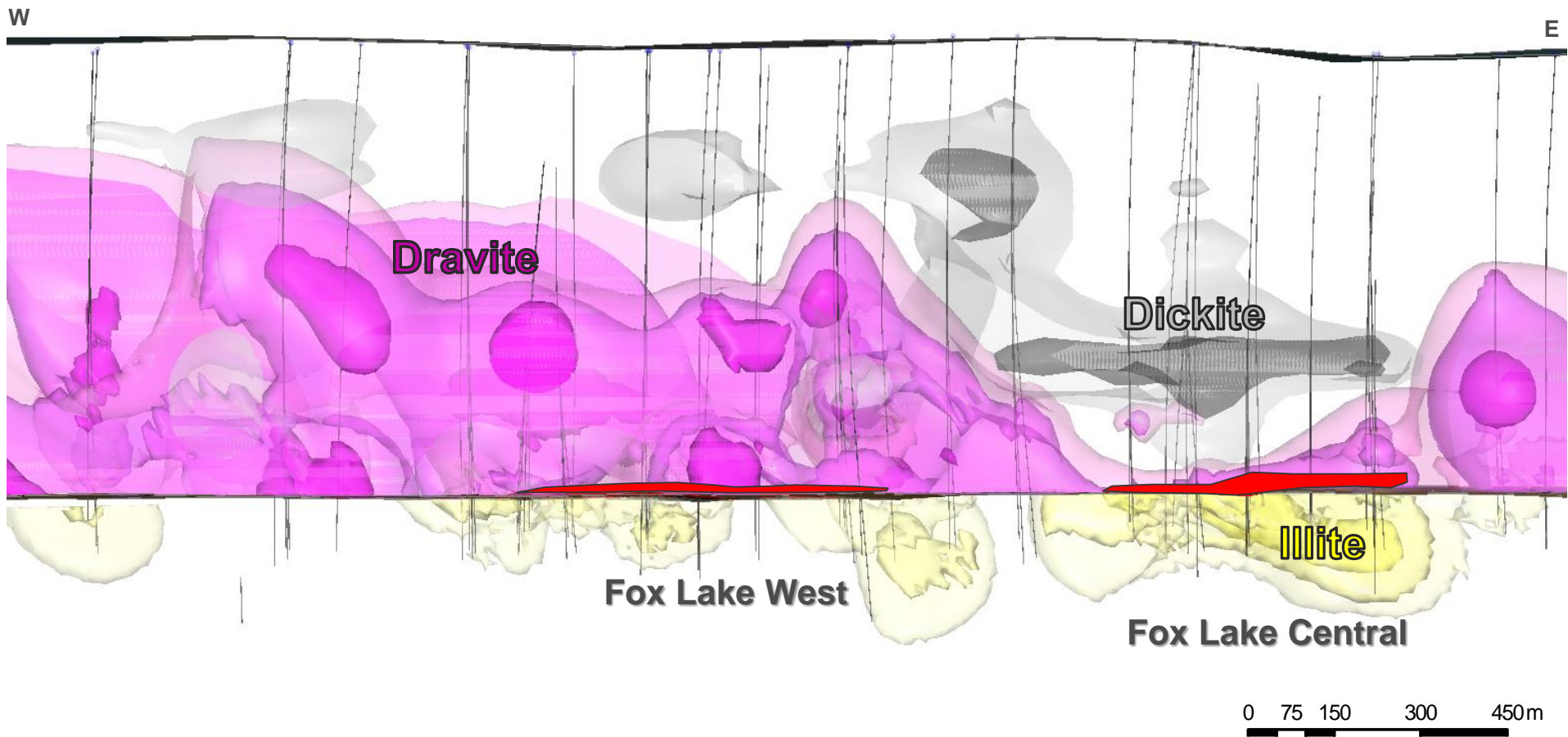
► Basement Alteration



► Exploration Pathfinders



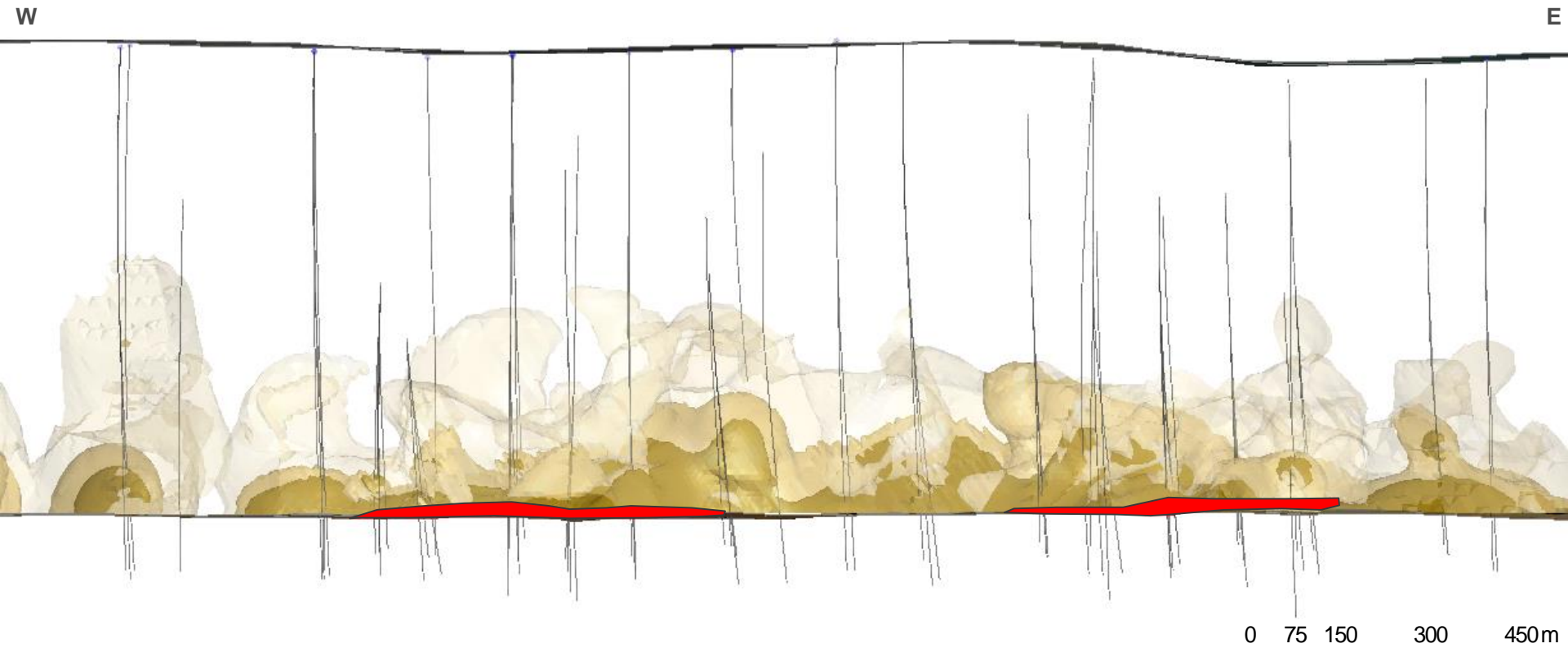
▶ Reflectance Mineralogy



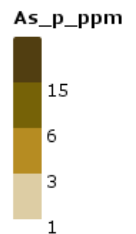
- West and Central zones show distinct spectral signatures

Dickite %	Illite %	Dravite %
> 25.0	> 25.0	> 19.0
> 50.0	> 50.0	> 32.0
> 74.0	> 75.0	> 56.0
	> 90.0	

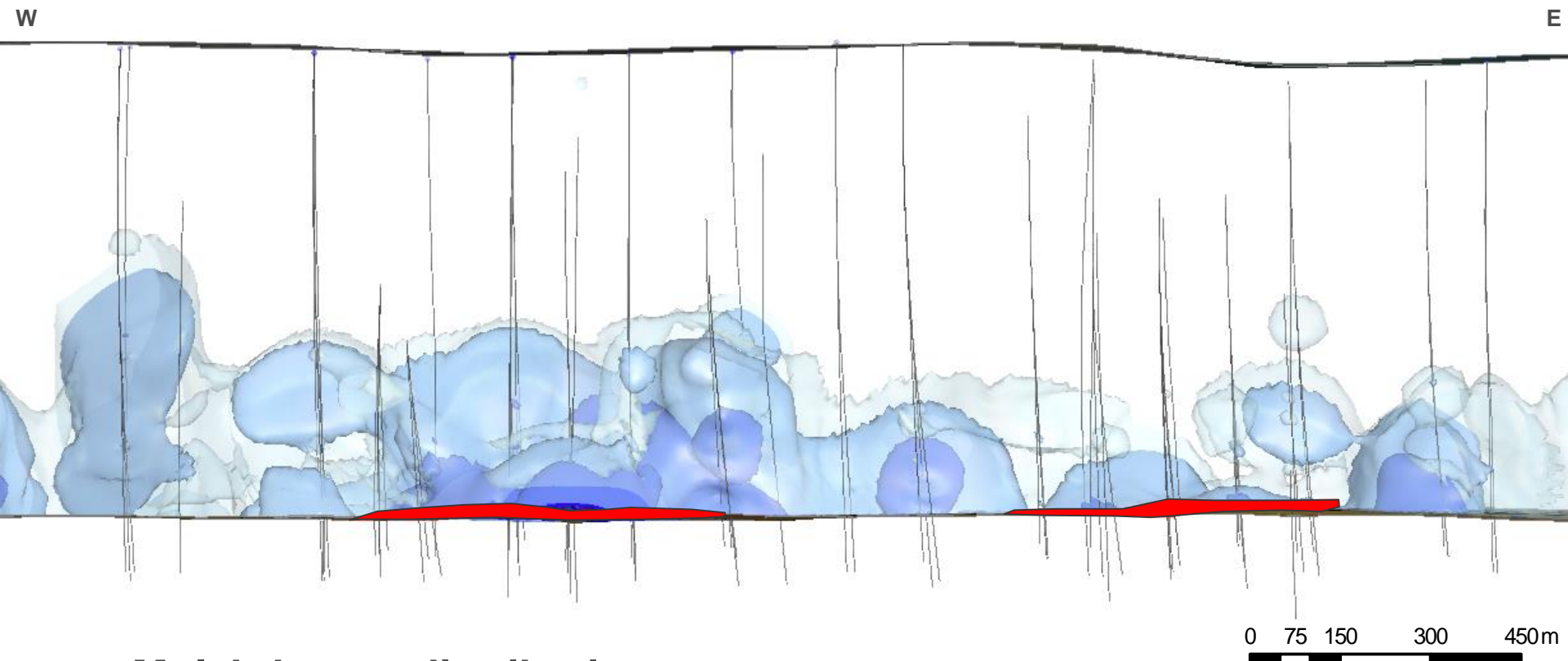
► Geochemical Anomalism



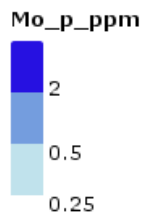
- Arsenic distribution



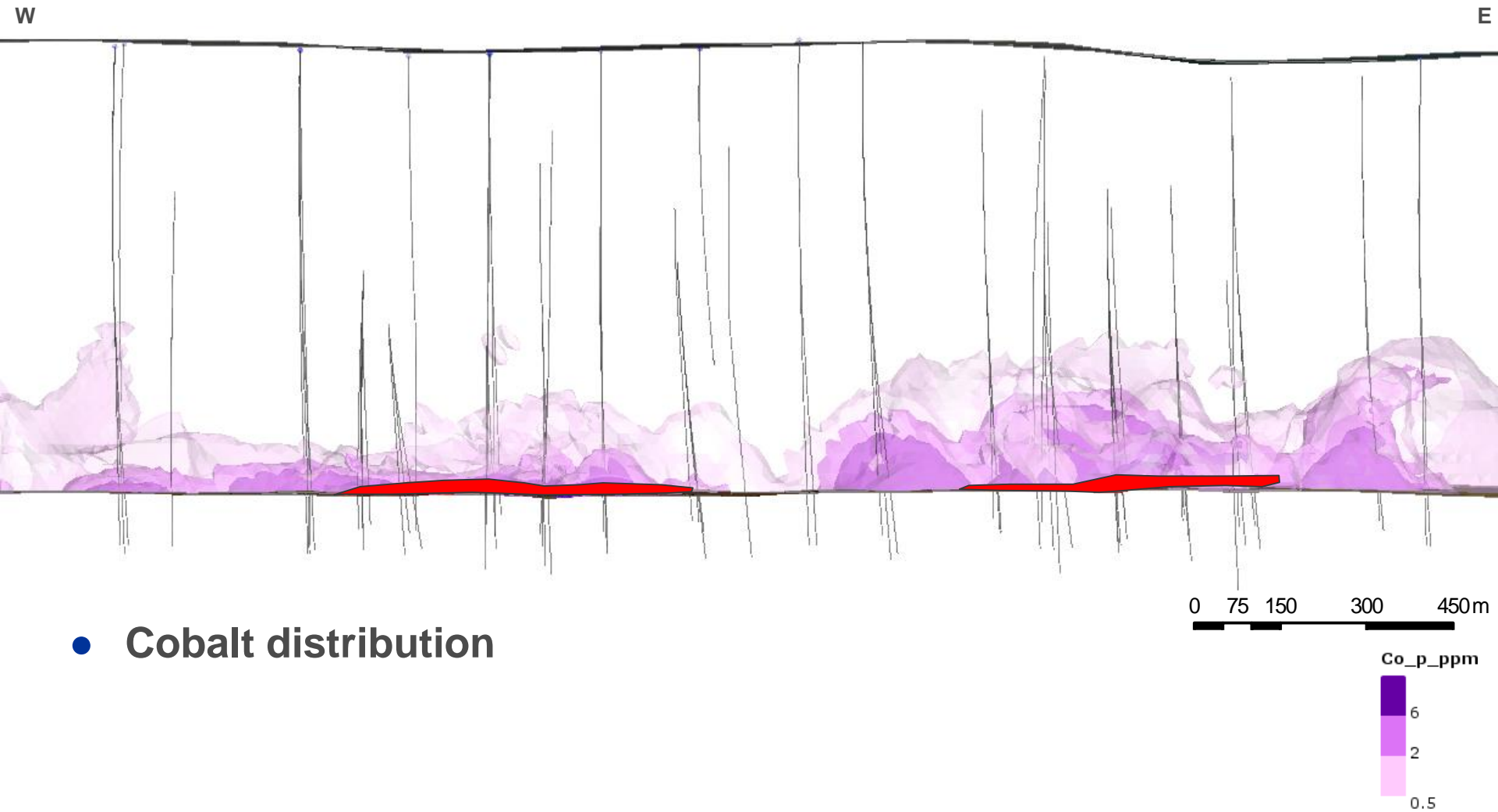
► Geochemical Anomalism



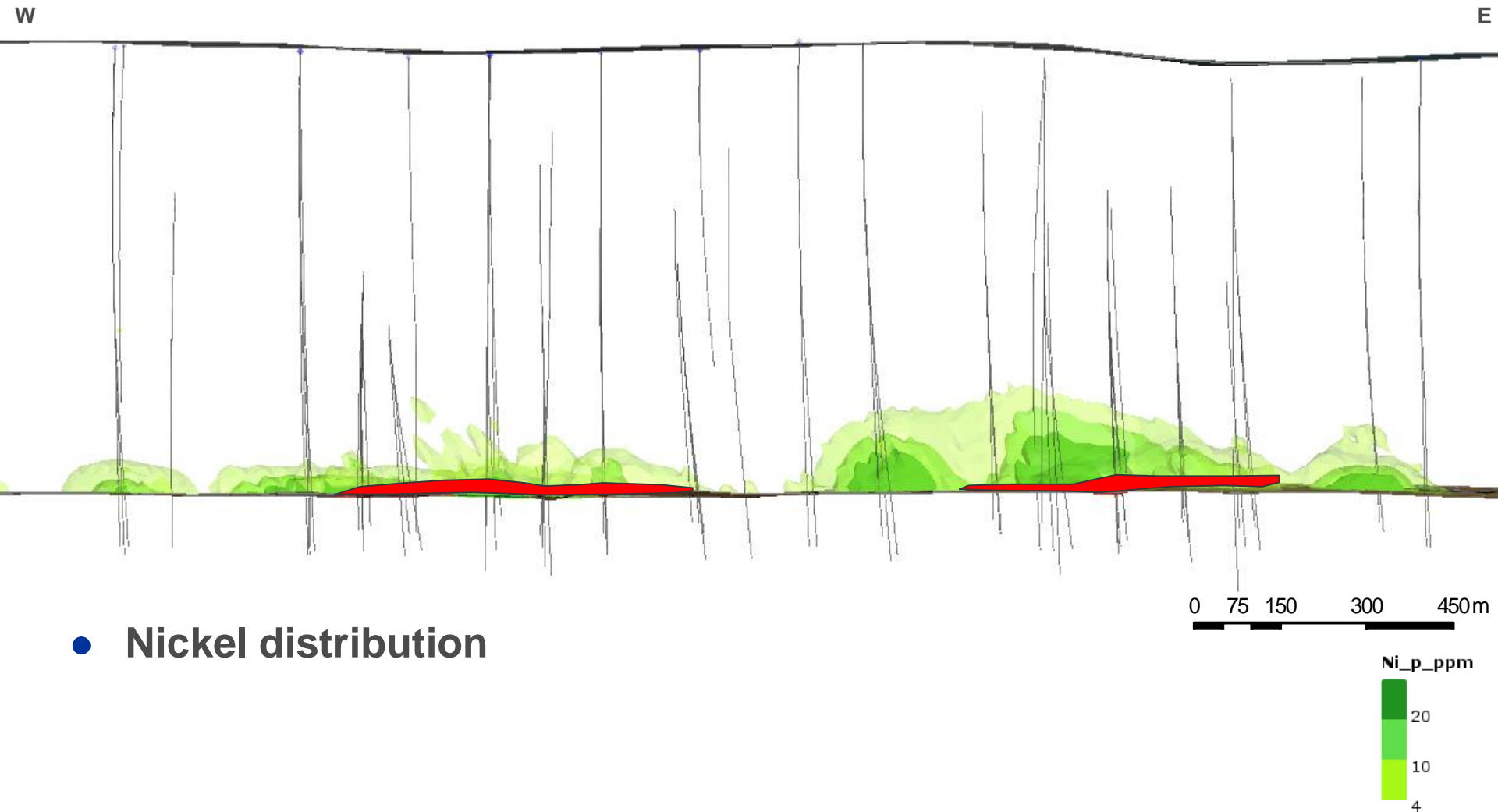
- Molybdenum distribution



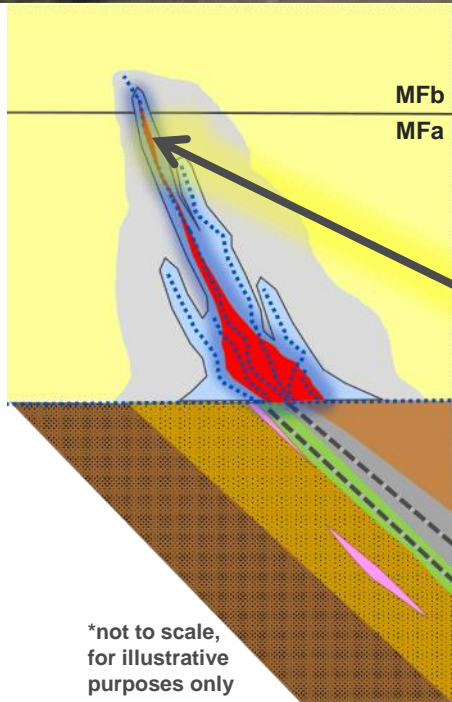
► Geochemical Anomalism



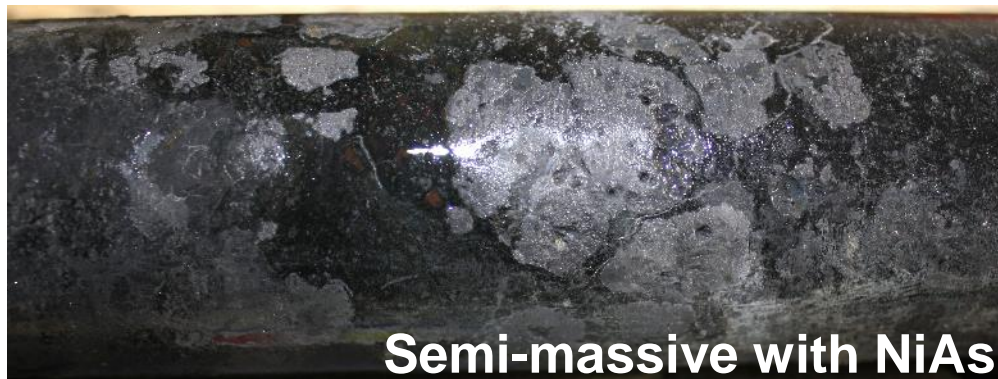
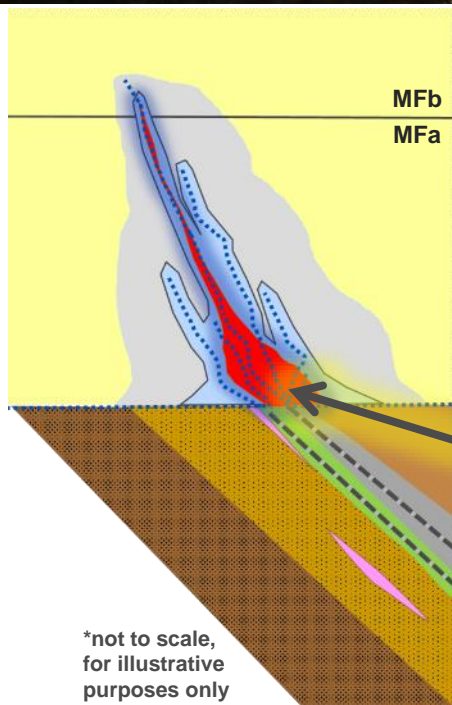
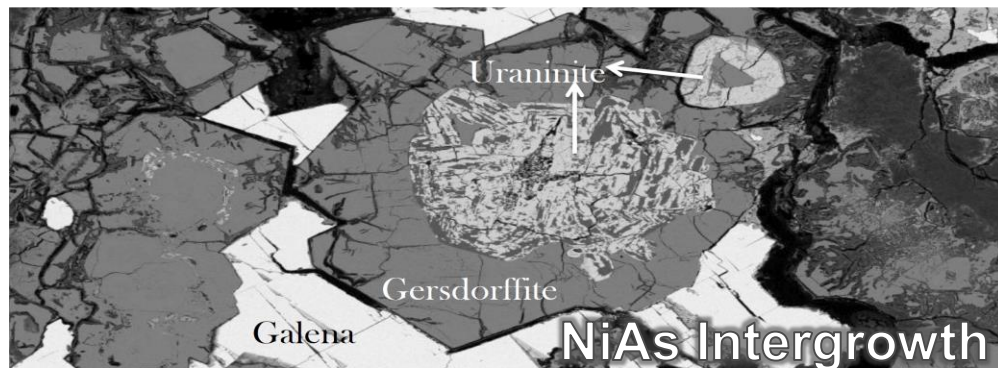
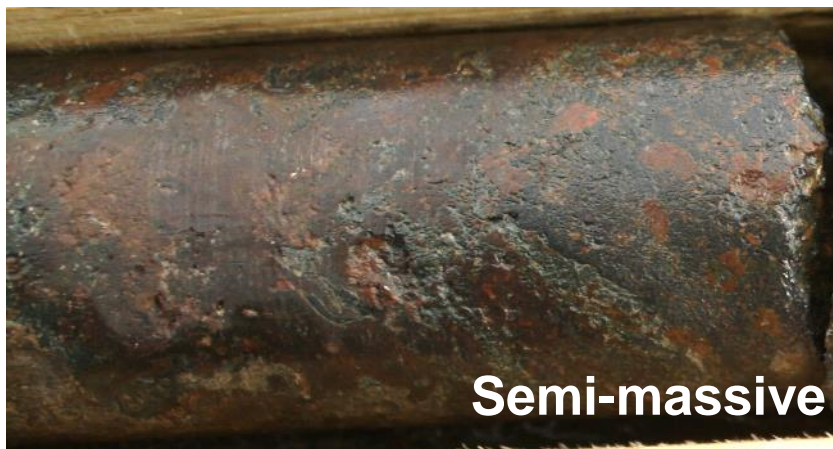
► Geochemical Anomalism



► Fox Lake Mineralization

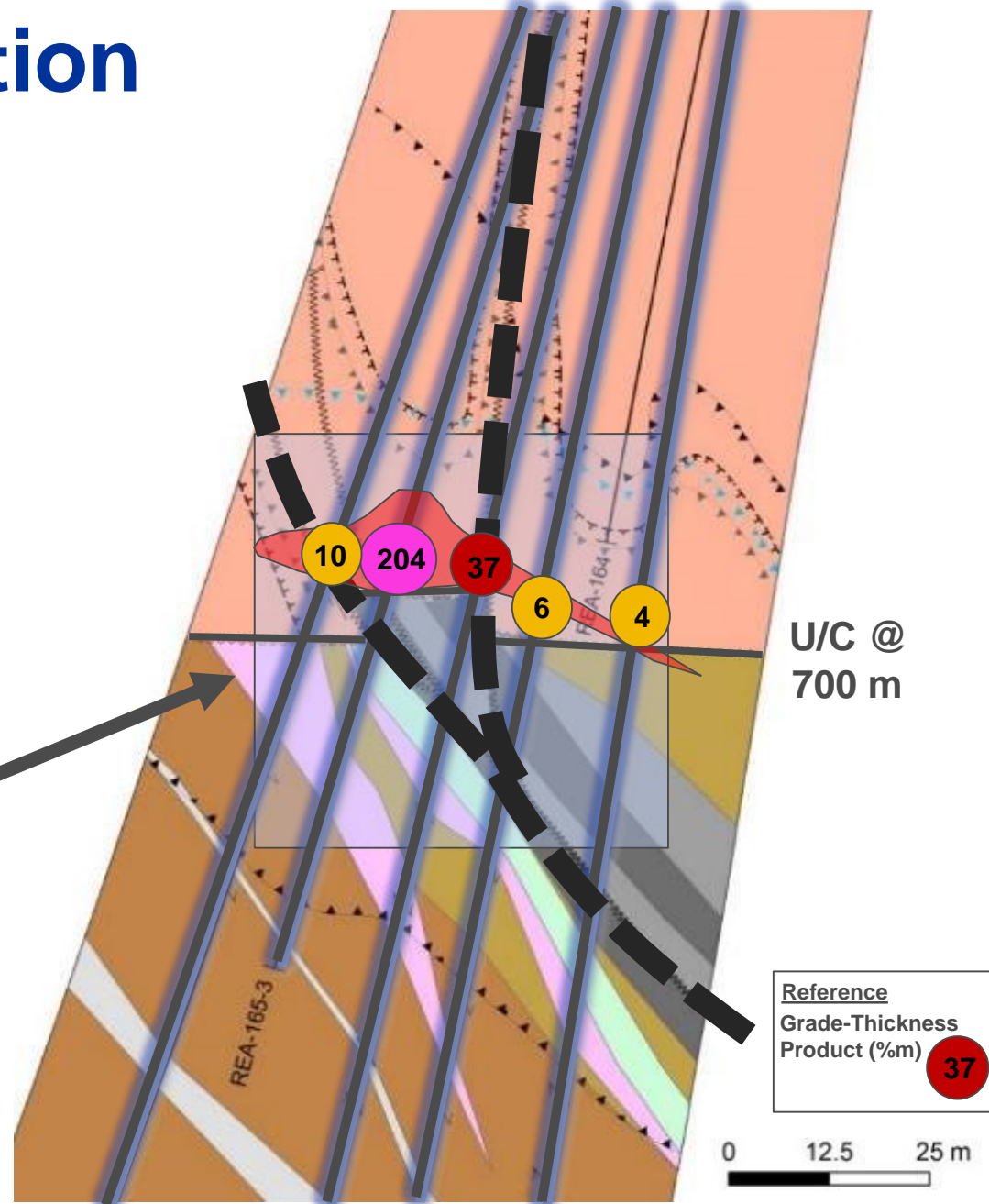
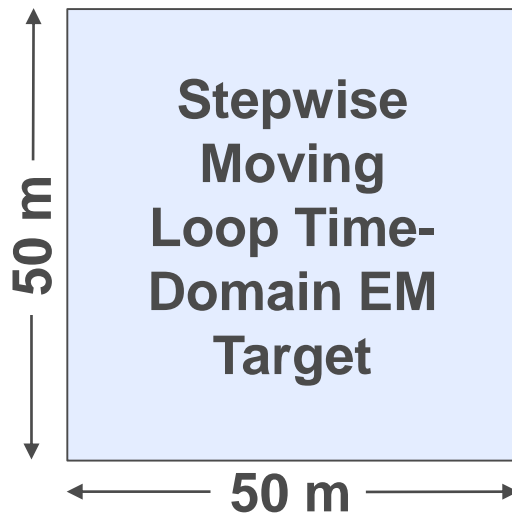


Fox Lake Mineralization

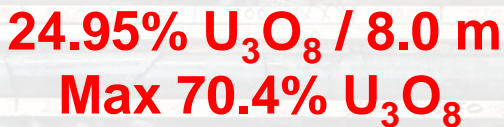


► Grade Distribution

- Narrow target = drilling strategy required
- Multiple drill holes necessary to test ideal target



REA-165-3



U/C

► Summary

- **Discovery through delineation to maiden resource estimate in 5 years**
- **Exploration success resulting from early recognition of significant features, evaluation of deposit model**
- **Tight nature of high grade mineralization = challenging evaluation**
- **C10 corridor an extensive and fertile mineralizing system**
 - Geochemical anomalism/reflectance mineralogical signature extends over 7 km
 - Potential for additional mineralization exists along the corridor



Questions

Thank You!

